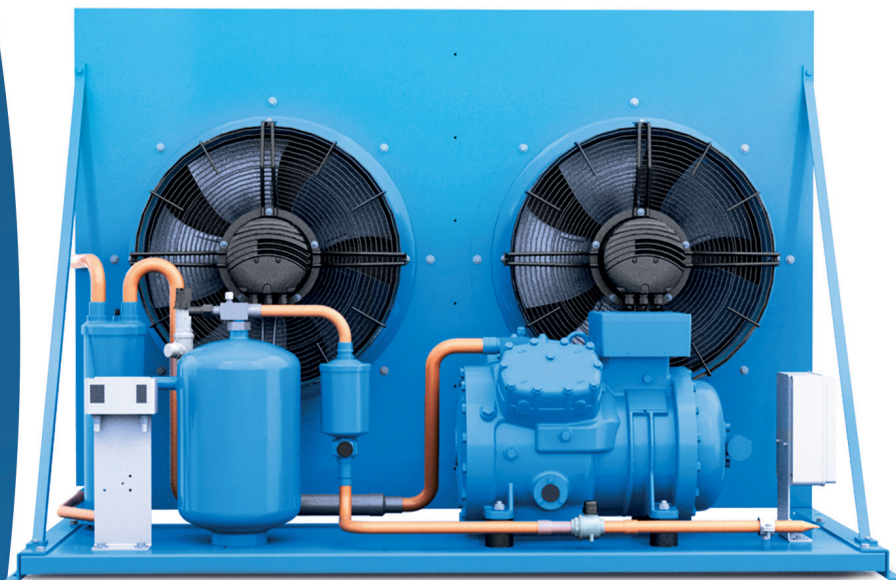


50 Hz & 60 Hz ●

EB-EBT SERIES

AIR-COOLED
CONDENSING UNITS



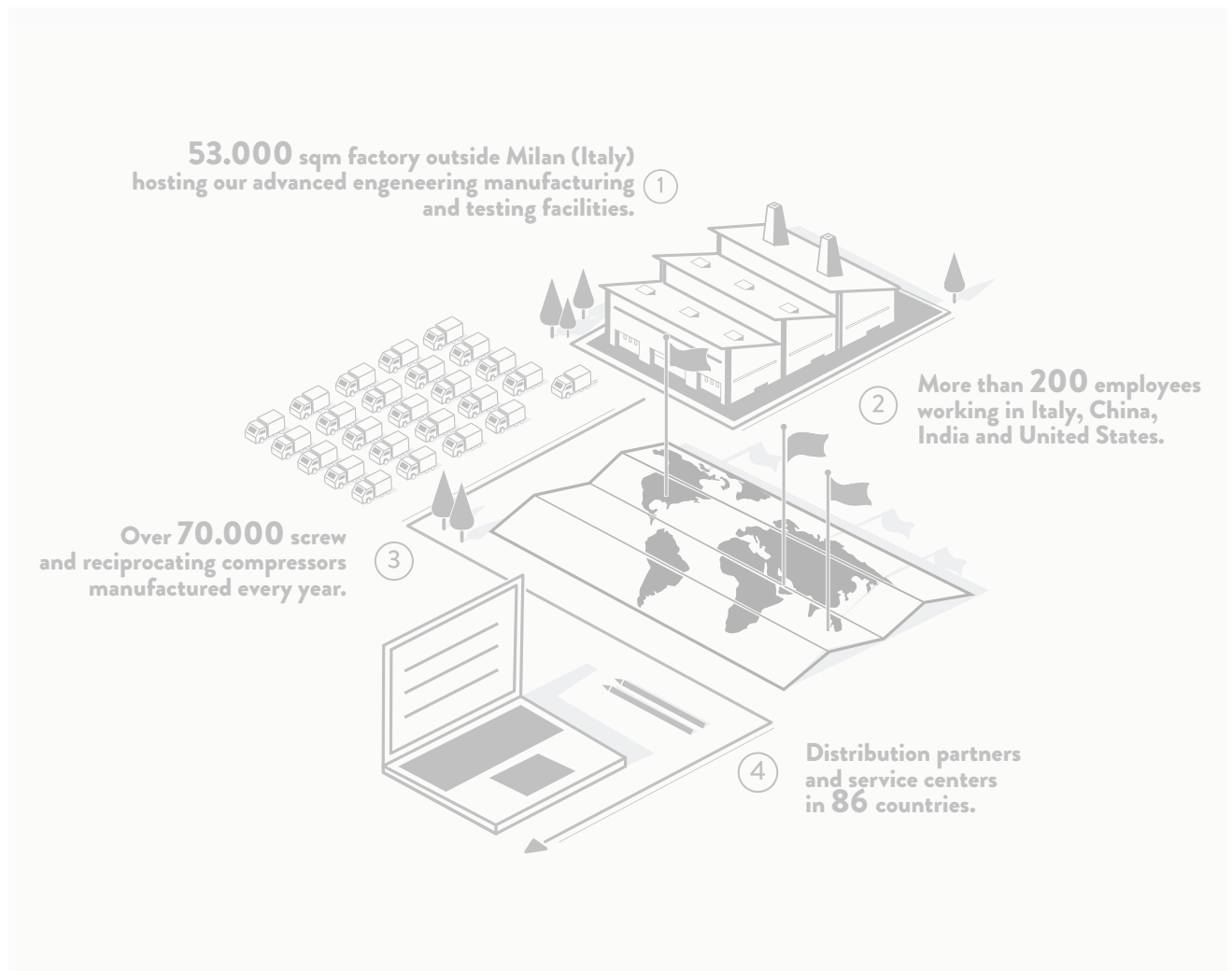
frascold[®]

INDEX

4	About the Company
5	Segments and Solutions
6	Product Information
12	Technical Data and Options
20	Technical Drawings and Dimensions
40	Contact us

ABOUT THE COMPANY

Frascold manufactures over 70,000 screw and reciprocating compressors a year. Our 53,000 m² factory outside of Milan (Italy) houses our advanced engineering, manufacturing and testing facilities. More than 200 employees work in the Headquarters and in the Subsidiaries based in the United States, China and India, with distribution partners and service centers in 86 countries.

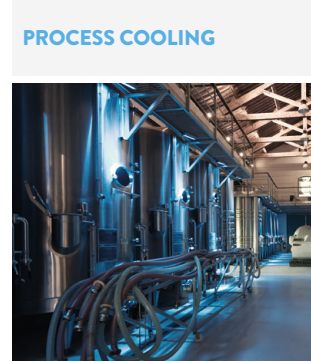
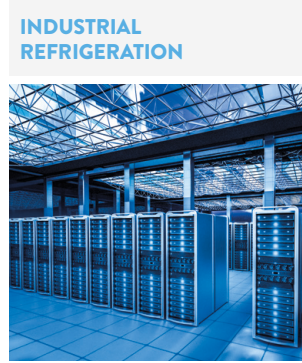


4

More than 85 years ago Frascold was born as a small family owned Company developing solutions in refrigeration and conditioning industry. Today we invest more and more in people, products, technologies and services aiming to become the best partner for our Customers and the touchstone for the market.

GIUSEPPE GALLI - Frascold Executive Managing Director

SEGMENTS



SOLUTIONS

Cooling capacity range @50Hz & @60Hz



SCREW COMPRESSORS

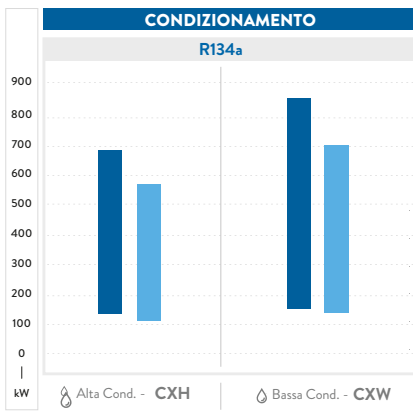


RECIPROCATING COMPRESSORS



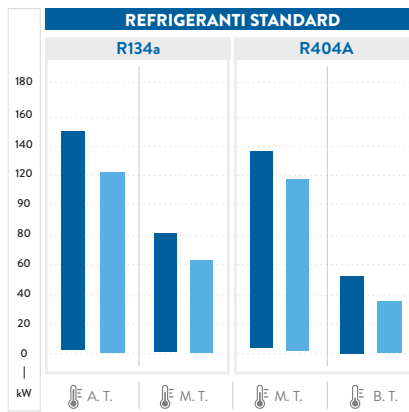
CONDENSING UNITS

60Hz 50Hz



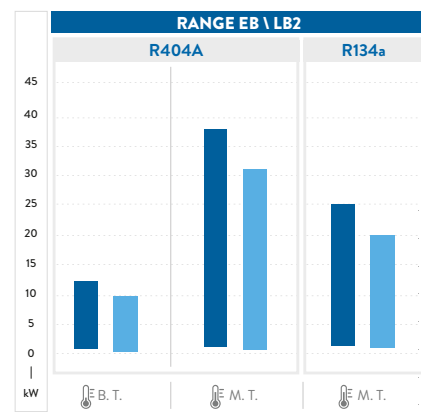
Riferimento dati condizioni di prova :

A. Cond.: evap. T. +2°C; cond. T. +50°C; surriscaldamento 10K; sottoraffreddamento 5K
 B. Cond.: evap. T. +3°C; cond. T. +38°C; surriscaldamento 10K; sottoraffreddamento 5K



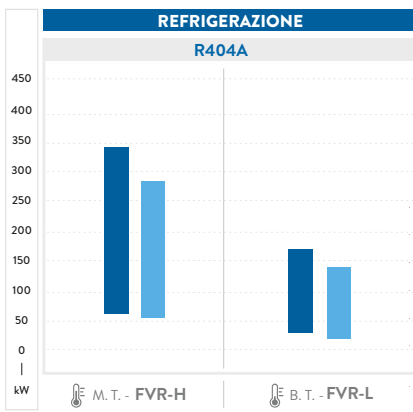
Riferimento dati condizioni di prova :

A.T.: evap. T. +5°C; cond. T. +50°C
 M.T.: evap. T. -10°C; cond. T. +45°C
 B.T.: evap. T. -35°C; cond. T. +40°C



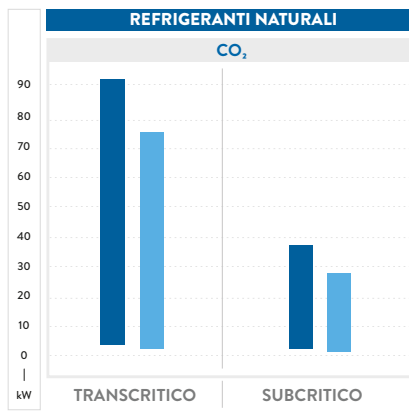
Riferimento dati condizioni di prova :

M.T.: capacità di raffreddamento @32°C ambiente T.; evap. T. -10°C
 B.T.: capacità di raffreddamento @32°C ambiente T.; evap. T. -35°C



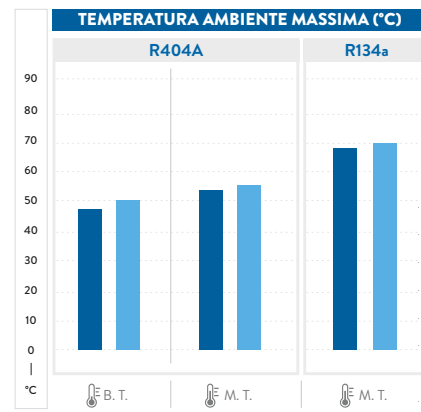
Riferimento dati condizioni di prova :

M.T.: evap. T. -10°C; cond. T. +45°C
 B.T.: evap. T. -35°C; cond. T. +40°C ECO



Riferimento dati condizioni di prova :

Transcritico: Evap. T. -10°C; Uscita raffreddamento gas T. 33°C;
 Pressione raffreddamento gas 83,7 bar; surriscaldamento 10K;
 Subcritico: Evap. T. -30°C, Cond. T. +10°C; surriscaldamento 10K;



Riferimento dati condizioni di prova :

M.T.: evap. T. -10°C
 B.T.: evap. T. -35°C



6

AIR-COOLED CONDENSING UNITS WITH SEMI-HERMETIC COMPRESSOR

Frascold offers a wide range of commercial and industrial cooling condensing units for medium and low temperature applications. Their compact and innovative design is extraordinary and also meets requirements for compact installations in small spaces and in environments where the noise level must be controlled and restricted. The range of models has two main lines:

- **EB models for moderate climate areas with a single stage compressor.**
- **EBT models for tropical climate areas.**

EB and EBT units are used in many cooling installations, including: cold and refrigerated rooms, supermarkets and shops, distribution centers, industrial applications, cooling processes in the food production and preservation industry.

FEATURES & BENEFITS



Reliable operation

Frascold's condensing units are rigorously assembled and tested in our factories in Italy. The optional Diagnose technology protection system can be installed on all Frascold compressors and enables early detection of faults and their rapid resolution, thus reducing maintenance and system downtime.



Full assistance

Frascold offers accurate and comprehensive customer service and prompt assistance in any emergency, both directly and through an extensive network of service centers and partners distributed across all five continents.



Low noise

Frascold compressors are distinguished by their particularly low noise level achieved through the intelligent combination of a body structure, mechanical components and the electric motor. This also enables unit installations very close to the utility in order to reduce pressure drops and the possible danger of leaks.



Reduced consumption

The best efficiency of condensing units is reached thanks to the advanced design of Frascold semi-hermetic compressors and correct sizing of all components used in the units.



Easy to install and maintain

As a result of their design structure, installation of the units is made simple. Accessibility to all components enables quick and safe maintenance operations.



Compact and complete

Their compact size also makes them the perfect solution for installations with limited space.



Wide temperature range and universal use

The range of units enables temperature control in MT, LT and HT. The units can be used with all HCFC and HFC refrigerants.

CONFORMITY DECLARATION

Frascold condensing units comply with the following Directives:

- **Ecodesign Directive 2009/125/CE**
- **Machinery directive 2006/42/CE**
- **Low voltage directive 2014/35/EU**

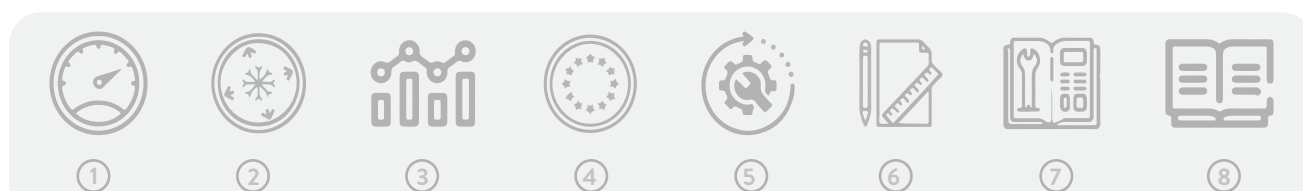
Condensing units are not functional assemblies, which means that in order to work they need to be integrated into a device or system. It is forbidden to commission the product before the device/system in which the cooling unit will be incorporated has been declared compliant with the provisions of the relevant directives, with particular reference to the directive regarding pressure equipment.

Frascold condensing units are constructed according to European safety standards. For the relevant standards please refer to the Manufacturer's Declaration, available on request or on the www.frascold.it website in the certification section.

8

PERFORMANCE DATA FSS3 SOFTWARE

Please refer to our [FSS3](#) to check performances of all our compressors.



①	②	③	④	⑤	⑥	⑦	⑧
① Operating limits	② Cooling capacity	③ All operating data with any kind of refrigerant	④ European standard EN12900 at 50Hz	⑤ Technical information	⑥ Drawings	⑦ Manuals	⑧ Catalogues and certifications

ASERCOM CERTIFICATION |

We have been members of ASERCOM since its foundation in 1992. This independent Association ensures the accuracy and reliability of the performance of compressors and condensing units. This certification guarantees that the performance published corresponds to that actually measured with reference to European standard **EN12900** for compressors and **EN13215** for condensing units. Check all our certified products at www.asercom.org.

CONTROL PROTECTION DEVICE

The compressor's may be equipped on request with the optional Kriwan INT69®Diagnose protection devices, a further development of the compressor's protection capability. The Diagnose technology is not limited to the protection of the compressor, it also provides specific functions of diagnostics aimed for:

- preventing operating faults that may occur in the system through the historical data analysis,
- planning maintenance actions,
- adjusting parameters for system optimization.

The additional protection capabilities help to extend the service life of the compressor. Through this technology applied to the compressors, users benefit from the increased reliability of the refrigeration system and the reduced operating and maintenance costs.

Reliable

- Guarantee of optimal operation throughout the life cycle of the compressor
- Extends the service life of the refrigeration systems
- Improves the compressor protection

Better diagnostic

- Immediate diagnosis and accurate problem-solving in case of error or failure
- Intelligent monitoring of the compressor operation

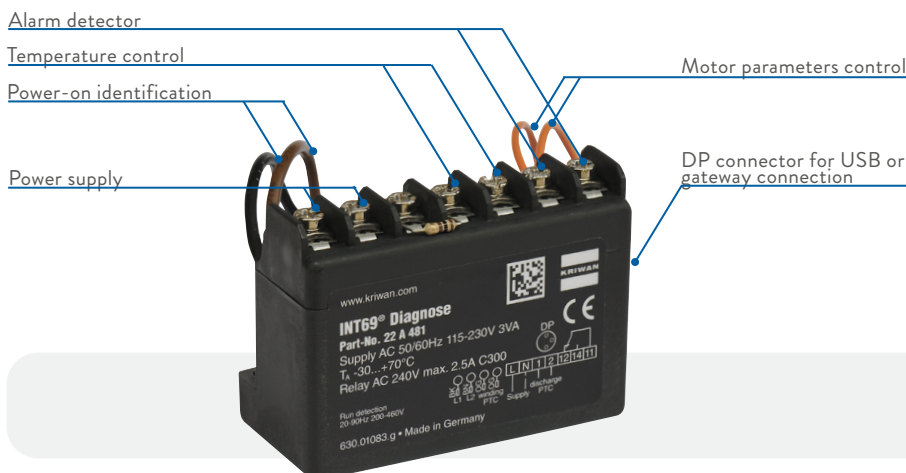
System improvements

- Reduces operating and maintenance costs
- Practical and with simple operation

Data management

- Automatically saves operational data and errors in a memory
- Technical sheet with the retrieval of stored data

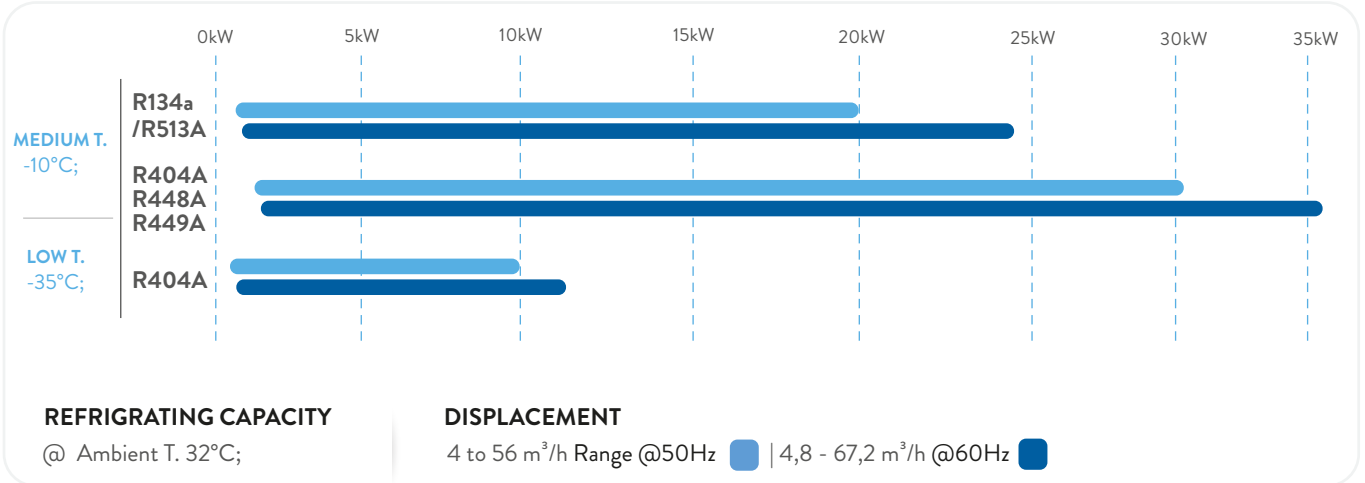
INT69® DIAGNOSE |



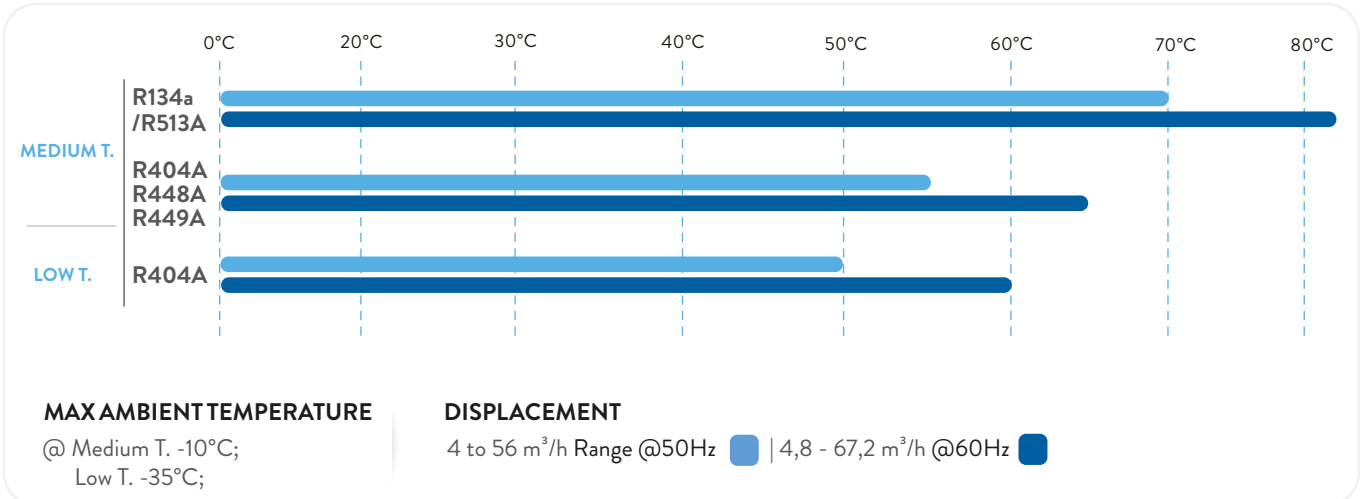
*INT69® Diagnose is intellectual property and trademarks® of KRIWAN Industrie-Elektronik GmbH.

CONDENSING UNITS PRODUCT RANGE

2 version, 58 models



10



LEGAL DISCLAIMER:

While Frascold has made every effort at the time of publication to ensure the accuracy of the information provided herein, product specifications and performances could be subject to change without notice. You can find the most updated information in our Product Selection Software FSS3 at the link: <https://www.frascold.it/en/software>

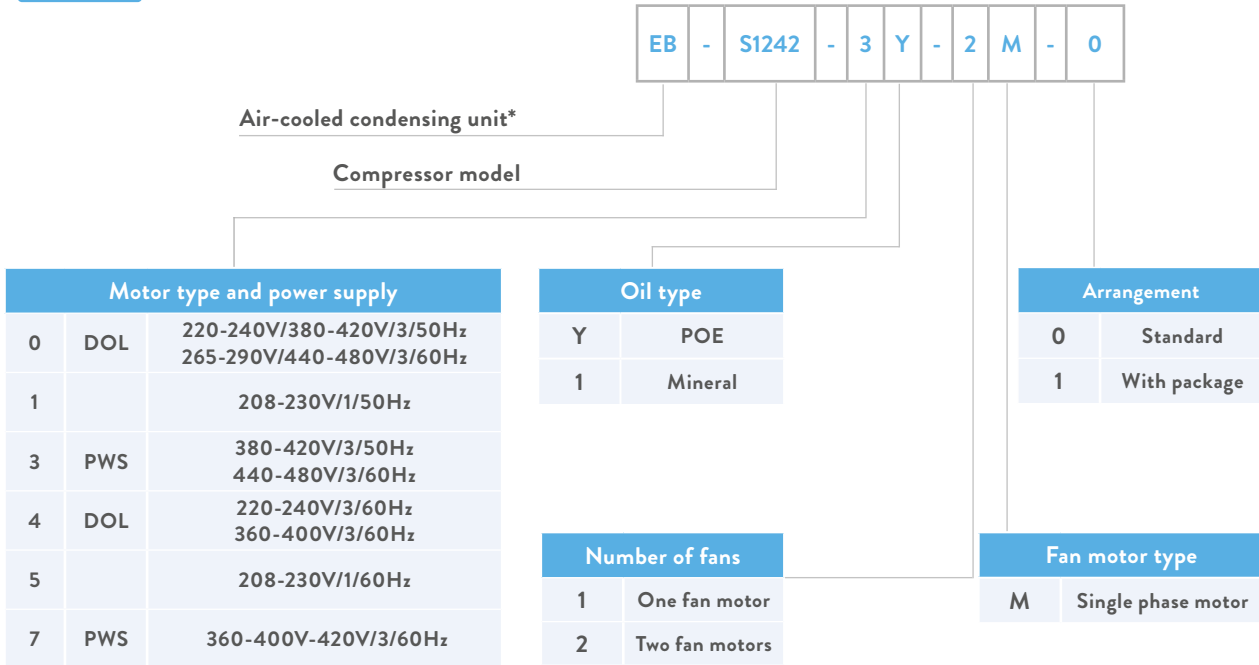
STANDARD DESIGN SPECIFICATIONS

- Semi-hermetic compressor with POE oil filling.
- Condensing unit with wide exchange surface and pipes optimized to reduce pressure drops and refrigerant charge.
- Fan motors with low power consumption and optimized airflow.
- Vertical-type liquid receiver with high storage capacity.
- Compressor discharge line with vibration damping pipe.
- Electronic device for compressor protection.
- Support base frame designed to ensure the necessary strength and stability.

The choice of all other components is based on :

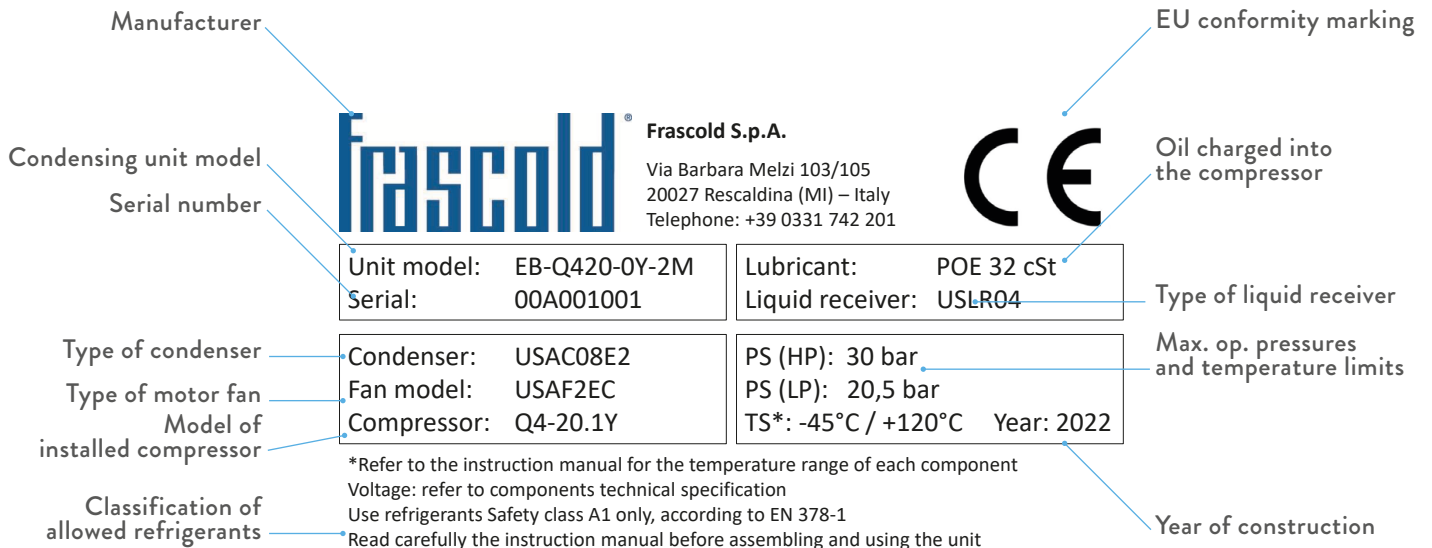
- Safety
- Social responsibility
- Respect for the environment
- Quality

MODEL DESIGNATION



*EB: Temperate climate - EBT: Tropical Climate

INFORMATION PLATE



TECHNICAL DATA AND OPTIONS

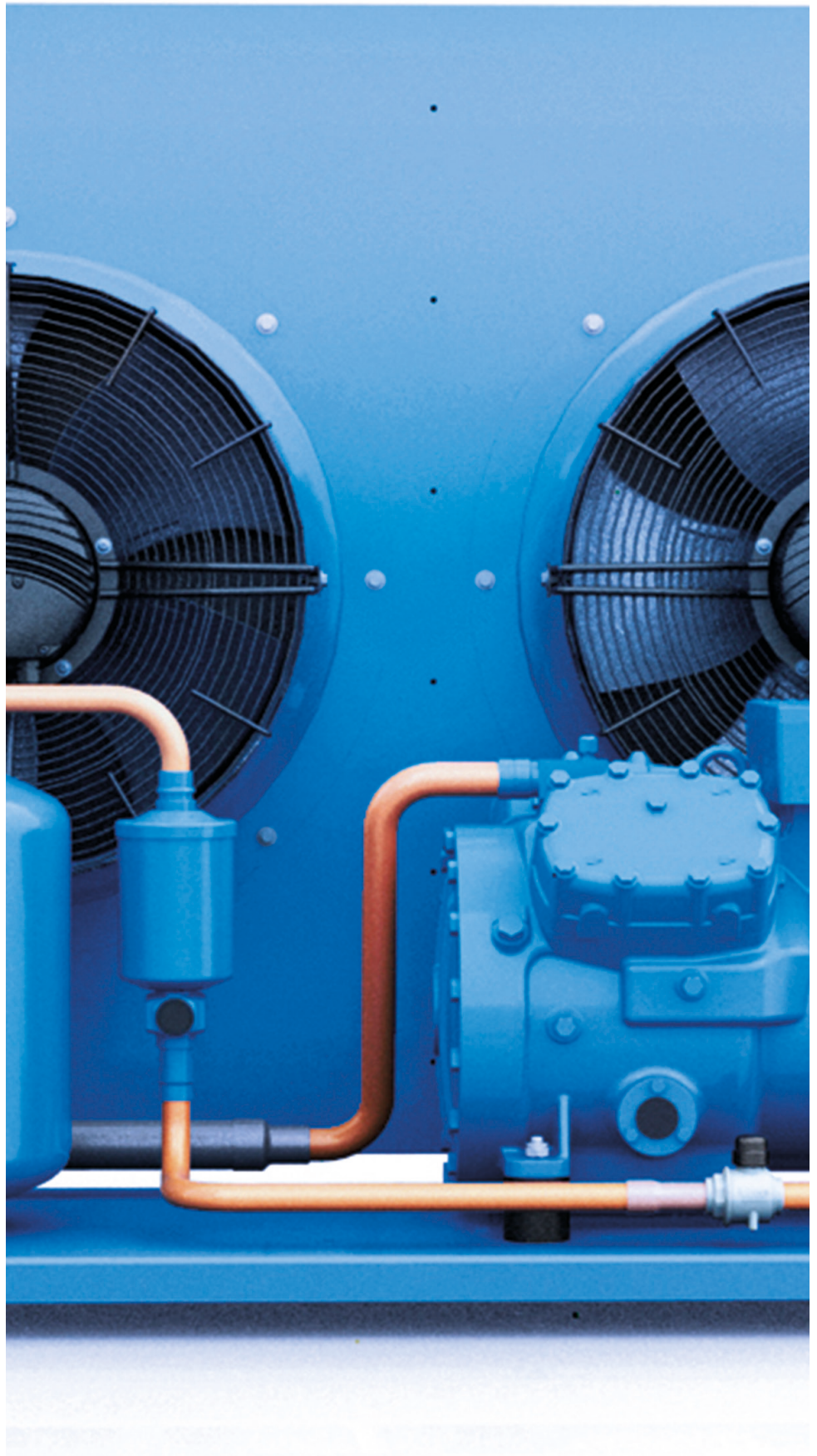
EB-EBT Series

LEGAL DISCLAIMER:

While Frascold has made every effort at the time of publication to ensure the accuracy of the information provided herein, product specifications and performances could be subject to change without notice.

You can find the most updated information in our Product Selection Software FSS3 at the link:

<https://www.frascold.it/en/software>



CDU STANDARD	Compressor ^{1.}							Condenser				
	Model	Displacement		Oil charge ^{2.}	Motor ^{3.}			Vol.	EC fan motors			
		50Hz	60Hz		Vers. ^{4.}	Power supply ^{5.}	MRA ^{6.}		Qty	Power supply ^{7.}	Max power ^{7.}	
		[m ³ /h]		[l]				[V]				[A]
EB-A054-0Y-1M	A05-4Y	3,95	4,74	1	1	A	2,8	0,7	1	230-240 / 1~	165	
EB-A075-0Y-1M	A07-5Y	4,93	5,92	1	1	A	2,7	0,7	1	230-240 / 1~	165	
EB-A16-0Y-1M	A1-6Y	5,47	6,56	1	1	A	3,6	0,7	1	230-240 / 1~	165	
EB-A17-0Y-1M	A1-7Y	6,91	8,29	1	2	A	3,7	0,7	1	230-240 / 1~	165	
EB-A157-0Y-1M	A1.5-7Y	6,91	8,29	1	1	A	4,5	1,2	1	230-240 / 1~	160	
EB-B159-0Y-1M	B1.5-9Y	8,96	10,75	1	2	A	5,9	0,7	1	230-240 / 1~	165	
EB-B210-0Y-1M	B2-10Y	9,88	11,86	1	1	A	6,7	1,2	1	230-240 / 1~	160	
EB-D211-0Y-1M	D2-11Y	11,26	13,51	1,1	1	A	7,1	1,2	1	230-240 / 1~	160	
EB-D213-0Y-1M	D2-13Y	13,15	15,78	1,1	2	A	7,1	1,2	1	230-240 / 1~	160	
EB-D313-0Y-1M	D3-13Y	13,15	15,78	1,1	1	A	8,8	1,2	1	230-240 / 1~	160	
EB-D316-0Y-2M	D3-16Y	16,4	19,68	1,1	2	A	9,9	1,6	2	230-240 / 1~	330	
EB-D318-0Y-2M	D3-18Y	17,93	21,52	1,1	2	A	10	1,6	2	230-240 / 1~	330	
EB-D416-0Y-2M	D4-16Y	16,4	19,68	1,2	1	A	11,6	2	2	230-240 / 1~	320	
EB-Q420-0Y-2M	Q4-20Y	19,77	23,72	1,6	2	A	10,1	2	2	230-240 / 1~	320	
EB-Q424-0Y-2M	Q4-24Y	23,91	28,69	1,6	2	A	11,7	2	2	230-240 / 1~	320	
EB-Q524-0Y-2M	Q5-24Y	23,91	28,69	1,6	1	A	13,8	2	2	230-240 / 1~	320	
EB-Q528-0Y-2M	Q5-28Y	28,02	33,62	1,6	2	A	14	2	2	230-240 / 1~	320	
EB-Q533-0Y-2M	Q5-33Y	32,66	39,19	1,6	2	A	14,4	4,9	2	230-240 / 1~	600	
EB-Q521-0Y-2M	Q5-21Y	21,18	25,42	1,6	1	A	11,6	4,9	2	230-240 / 1~	600	
EB-Q536-0Y-2M	Q5-36.1Y	35,86	43,03	1,6	1	A	11,8	4,9	2	230-240 / 1~	600	
EB-Q728-0Y-2M	Q7-28Y	28,02	33,62	1,6	1	A	17,6	4,9	2	230-240 / 1~	600	
EB-Q733-0Y-2M	Q7-33Y	32,66	39,19	1,6	1	A	20	4,9	2	230-240 / 1~	600	
EB-Q736-0Y-2M	Q7-36Y	35,86	43,03	1,6	1	A	19,4	4,9	2	230-240 / 1~	600	
EB-S842-3Y-2M	S8-42Y	41,32	49,58	2,9	2	B	20,3	6,5	2	230-240 / 1~	1300	
EB-S1052-3Y-2M	S10-52Y	51,5	61,8	2,9	2	B	24,5	6,5	2	230-240 / 1~	1300	
EB-S1242-3Y-2M	S12-42Y	41,32	49,58	2,9	1	B	22,4	6,5	2	230-240 / 1~	1300	
EB-S1552-3Y-2M	S15-52Y	51,5	61,8	2,9	1	B	32,4	6,5	2	230-240 / 1~	1300	
EB-S1556-3Y-2M	S15-56Y	56	67,2	2,9	2	B	30,7	6,5	2	230-240 / 1~	1300	
EB-S2056-3Y-2M	S20-56Y	56	67,2	2,9	1	B	38,4	10,8	2	230-240 / 1~	1300	

- For other compressor technical data refer to catalogue FCAT100
- POE oil
- Standard motor / Contact Frascold for different motors
- Motor size: **version 1** = optimized for medium-high evaporating temperatures / **version 2** = optimized for low evaporating temperatures
- A** = 220-240V Δ / 360-420V Y / 3~ / 50Hz // 265-290V Δ / 440-480V Y / 3~ / 60Hz -
B = 380-420V Y / 3~ / 50Hz // 440-480V Y / 3~ / 60Hz
Tolerance +/- 10% relative to the mean value of the voltage range.
- Maximum operating current at full load (400V). For rated current see Frascold Selection Software program /
Maximum operating current (MRA) at 230V = (400V MRA) x 1.75
- Condenser total value

	Condenser		Liquid receiver		Piping connections				CDU STANDARD
	EC fan motors		Vol.	Safety valve connection	Suction line		Liquid line		
	Max absorbed current	Max air flow			[mm]	[inch]	[mm]	[inch]	
	[A]	[m ³ /h]							
	1,35	2650	1,5	1/4" NPT	15,8	5/8"	9,5	3/8"	EB-A054-0Y-1M
	1,35	2650	1,5	1/4" NPT	15,8	5/8"	9,5	3/8"	EB-A075-0Y-1M
	1,35	2650	1,5	1/4" NPT	15,8	5/8"	9,5	3/8"	EB-A16-0Y-1M
	1,35	2650	1,5	1/4" NPT	15,8	5/8"	9,5	3/8"	EB-A17-0Y-1M
	1,25	3435	2,2	1/4" NPT	15,8	5/8"	12,7	1/2"	EB-A157-0Y-1M
	1,35	2650	1,5	1/4" NPT	15,8	5/8"	9,5	3/8"	EB-B159-0Y-1M
	1,25	3435	2,2	1/4" NPT	19	3/4"	12,7	1/2"	EB-B210-0Y-1M
	1,25	3435	2,2	1/4" NPT	22,2	7/8"	12,7	1/2"	EB-D211-0Y-1M
	1,25	3435	2,2	1/4" NPT	22,2	7/8"	12,7	1/2"	EB-D213-0Y-1M
	1,25	3435	2,2	1/4" NPT	28,6	1 1/8"	12,7	1/2"	EB-D313-0Y-1M
	2,7	5300	2,2	1/4" NPT	28,6	1 1/8"	12,7	1/2"	EB-D316-0Y-2M
	2,7	5300	2,2	1/4" NPT	28,6	1 1/8"	12,7	1/2"	EB-D318-0Y-2M
	2,5	6870	3,4	1/4" NPT	28,6	1 1/8"	15,8	5/8"	EB-D416-0Y-2M
	2,5	6870	3,4	1/4" NPT	28,6	1 1/8"	15,8	5/8"	EB-Q420-0Y-2M
	2,5	6870	3,4	1/4" NPT	28,6	1 1/8"	15,8	5/8"	EB-Q424-0Y-2M
	2,5	6870	3,4	1/4" NPT	28,6	1 1/8"	15,8	5/8"	EB-Q524-0Y-2M
	2,5	6870	3,4	1/4" NPT	35	1 3/8"	15,8	5/8"	EB-Q528-0Y-2M
	4,1	12420	5,7	1/4" NPT	35	1 3/8"	19	3/4"	EB-Q533-0Y-2M
	4,1	12420	5,7	1/4" NPT	28,6	1 1/8"	19	3/4"	EB-Q521-0Y-2M
	4,1	12420	5,7	1/4" NPT	35	1 3/8"	19	3/4"	EB-Q536-0Y-2M
	4,1	12420	5,7	1/4" NPT	35	1 3/8"	19	3/4"	EB-Q728-0Y-2M
	4,1	12420	5,7	1/4" NPT	35	1 3/8"	19	3/4"	EB-Q733-0Y-2M
	4,1	12420	5,7	1/4" NPT	35	1 3/8"	19	3/4"	EB-Q736-0Y-2M
	5,8	18460	6,6	1/4" NPT	35	1 3/8"	19	3/4"	EB-S842-3Y-2M
	5,8	18460	6,6	1/4" NPT	35	1 3/8"	19	3/4"	EB-S1052-3Y-2M
	5,8	18460	6,6	1/4" NPT	35	1 3/8"	19	3/4"	EB-S1242-3Y-2M
	5,8	18460	6,6	1/4" NPT	42	1 5/8"	19	3/4"	EB-S1552-3Y-2M
	5,8	18460	6,6	1/4" NPT	42	1 5/8"	19	3/4"	EB-S1556-3Y-2M
	5,8	18460	11	1/2" NPT	42	1 5/8"	22,2	7/8"	EB-S2056-3Y-2M

Find the most updated information in our Product Selection Software FSS3 at the link :

<https://www.frascold.it/en/software>

CDU STANDARD	Compressor ¹							Condenser				
	Model	Displacement		Oil charge ²	Motor ³			Vol.	EC fan motors			
		50Hz	60Hz		Vers. ⁴	Power supply ⁵	MRA ⁶		Qty	Power supply ⁷	Max power ⁷	
		[m ³ /h]		[l]		[V]	[A]	[l]		[V]	[kW]	
EBT-A054-0Y-2M	A05-4Y	3,95	4,74	1	1	A	2,8	1,6	2	230-240 / 1~	330	
EBT-A075-0Y-2M	A07-5Y	4,93	5,92	1	1	A	2,7	1,6	2	230-240 / 1~	330	
EBT-A16-0Y-2M	A1-6Y	5,47	6,56	1	1	A	3,6	1,6	2	230-240 / 1~	330	
EBT-A17-0Y-2M	A1-7Y	6,91	8,29	1	2	A	3,7	1,6	2	230-240 / 1~	330	
EBT-A157-0Y-2M	A1.5-7Y	6,91	8,29	1	1	A	4,5	1,6	2	230-240 / 1~	330	
EBT-B159-0Y-2M	B1.5-9Y	8,96	10,75	1	2	A	5,9	1,6	2	230-240 / 1~	330	
EBT-B210-0Y-2M	B2-10Y	9,88	11,86	1	1	A	6,7	1,6	2	230-240 / 1~	330	
EBT-D211-0Y-2M	D2-11Y	11,26	13,51	1,1	1	A	7,1	2	2	230-240 / 1~	320	
EBT-D213-0Y-2M	D2-13Y	13,15	15,78	1,1	2	A	7,1	2	2	230-240 / 1~	320	
EBT-D313-0Y-2M	D3-13Y	13,15	15,78	1,1	1	A	8,8	2	2	230-240 / 1~	320	
EBT-D316-0Y-2M	D3-16Y	16,4	19,68	1,1	2	A	9,9	2	2	230-240 / 1~	320	
EBT-D318-0Y-2M	D3-18Y	17,93	21,52	1,1	2	A	10	2	2	230-240 / 1~	320	
EBT-D416-0Y-2M	D4-16Y	16,4	19,68	1,2	1	A	11,6	4,9	2	230-240 / 1~	600	
EBT-D418-0Y-2M	D4-18Y	17,93	21,52	1,2	1	A	12,5	4,9	2	230-240 / 1~	600	
EBT-Q420-0Y-2M	Q4-20Y	19,77	23,72	1,6	2	A	10,1	4,9	2	230-240 / 1~	600	
EBT-Q424-0Y-2M	Q4-24Y	23,91	28,69	1,6	2	A	11,7	4,9	2	230-240 / 1~	600	
EBT-Q524-0Y-2M	Q5-24Y	23,91	28,69	1,6	1	A	13,8	4,9	2	230-240 / 1~	600	
EBT-Q528-0Y-2M	Q5-28Y	28,02	33,62	1,6	2	A	14	4,9	2	230-240 / 1~	600	
EBT-Q533-0Y-2M	Q5-33Y	32,66	39,19	1,6	2	A	14,4	6,5	2	230-240 / 1~	1300	
EBT-Q521-0Y-2M	Q5-21Y	21,18	25,42	1,6	1	A	11,6	6,5	2	230-240 / 1~	1300	
EBT-Q728-0Y-2M	Q7-28Y	28,02	33,62	1,6	1	A	17,6	6,5	2	230-240 / 1~	1300	
EBT-Q733-0Y-2M	Q7-33Y	32,66	39,19	1,6	1	A	20	6,5	2	230-240 / 1~	1300	
EBT-Q536-0Y-2M	Q5-36.1Y	35,86	43,03	1,6	1	A	11,8	6,5	2	230-240 / 1~	1300	
EBT-Q736-0Y-2M	Q7-36Y	35,86	43,03	1,6	1	A	19,4	6,5	2	230-240 / 1~	1300	
EBT-S842-3Y-2M	S8-42Y	41,32	49,58	2,9	2	B	20,3	10,8	2	230-240 / 1~	1300	
EBT-S1242-3Y-2M	S12-42Y	41,32	49,58	2,9	1	B	22,4	10,8	2	230-240 / 1~	1300	
EBT-S1052-3Y-2M	S10-52Y	51,5	61,8	2,9	2	B	24,5	10,8	2	230-240 / 1~	1300	
EBT-S1552-3Y-2M	S15-52Y	51,5	61,8	2,9	1	B	32,4	10,8	2	230-240 / 1~	1300	
EBT-S1556-3Y-2M	S15-56Y	56	67,2	2,9	2	B	30,7	10,8	2	230-240 / 1~	1300	

1. For other compressor technical data refer to catalogue FCAT100
2. POE oil
3. Standard motor / Contact Frascold for different motors
4. Motor size: **version 1** = optimized for medium-high evaporating temperatures / **version 2** = optimized for low evaporating temperatures
5. **A** = 220-240V Δ / 360-420V Y / 3~ / 50Hz // 265-290V Δ / 440-480V Y / 3~ / 60Hz -
B = 380-420V Y / 3~ / 50Hz // 440-480V Y / 3~ / 60Hz
Tolerance +/- 10% relative to the mean value of the voltage range.
6. Maximum operating current at full load (400V). For rated current see Frascold Selection Software program /
Maximum operating current (MRA) at 230V = (400V MRA) x 1.75
7. Condenser total value

	Condenser		Liquid receiver		Piping connections				CDU STANDARD
	EC fan motors		Vol.	Safety valve connection	Suction line		Liquid line		
	Max absorbed current	Max air flow			[mm]	[inch]	[mm]	[inch]	
	[A]	[m ³ /h]							
	2,7	5300	2,2	1/4" NPT	15,8	5/8"	12,7	1/2"	EBT-A054-0Y-2M
	2,7	5300	2,2	1/4" NPT	15,8	5/8"	12,7	1/2"	EBT-A075-0Y-2M
	2,7	5300	2,2	1/4" NPT	15,8	5/8"	12,7	1/2"	EBT-A16-0Y-2M
	2,7	5300	2,2	1/4" NPT	15,8	5/8"	12,7	1/2"	EBT-A17-0Y-2M
	2,7	5300	2,2	1/4" NPT	15,8	5/8"	12,7	1/2"	EBT-A157-0Y-2M
	2,7	5300	2,2	1/4" NPT	15,8	5/8"	12,7	1/2"	EBT-B159-0Y-2M
	2,7	5300	2,2	1/4" NPT	19	3/4"	12,7	1/2"	EBT-B210-0Y-2M
	2,5	6870	3,4	1/4" NPT	22,2	7/8"	15,8	5/8"	EBT-D211-0Y-2M
	2,5	6870	3,4	1/4" NPT	22,2	7/8"	15,8	5/8"	EBT-D213-0Y-2M
	2,5	6870	3,4	1/4" NPT	28,6	1 1/8"	15,8	5/8"	EBT-D313-0Y-2M
	2,5	6870	3,4	1/4" NPT	28,6	1 1/8"	15,8	5/8"	EBT-D316-0Y-2M
	2,5	6870	3,4	1/4" NPT	28,6	1 1/8"	15,8	5/8"	EBT-D318-0Y-2M
	4,1	12420	5,7	1/4" NPT	28,6	1 1/8"	19	3/4"	EBT-D416-0Y-2M
	4,1	12420	5,7	1/4" NPT	28,6	1 1/8"	19	3/4"	EBT-D418-0Y-2M
	4,1	12420	5,7	1/4" NPT	28,6	1 1/8"	19	3/4"	EBT-Q420-0Y-2M
	4,1	12420	5,7	1/4" NPT	28,6	1 1/8"	19	3/4"	EBT-Q424-0Y-2M
	4,1	12420	5,7	1/4" NPT	28,6	1 1/8"	19	3/4"	EBT-Q524-0Y-2M
	4,1	12420	5,7	1/4" NPT	35	1 3/8"	19	3/4"	EBT-Q528-0Y-2M
	5,8	18460	6,6	1/4" NPT	35	1 3/8"	19	3/4"	EBT-Q533-0Y-2M
	5,8	18460	6,6	1/4" NPT	28,6	1 1/8"	19	3/4"	EBT-Q521-0Y-2M
	5,8	18460	6,6	1/4" NPT	35	1 3/8"	19	3/4"	EBT-Q728-0Y-2M
	5,8	18460	6,6	1/4" NPT	35	1 3/8"	19	3/4"	EBT-Q733-0Y-2M
	5,8	18460	6,6	1/4" NPT	35	1 3/8"	19	3/4"	EBT-Q536-0Y-2M
	5,8	18460	6,6	1/4" NPT	35	1 3/8"	19	3/4"	EBT-Q736-0Y-2M
	5,8	18460	11	1/2" NPT	35	1 3/8"	22,2	7/8"	EBT-S842-3Y-2M
	5,8	18460	11	1/2" NPT	35	1 3/8"	22,2	7/8"	EBT-S1242-3Y-2M
	5,8	18460	11	1/2" NPT	35	1 3/8"	22,2	7/8"	EBT-S1052-3Y-2M
	5,8	18460	11	1/2" NPT	42	1 5/8"	22,2	7/8"	EBT-S1552-3Y-2M
	5,8	18460	11	1/2" NPT	42	1 5/8"	22,2	7/8"	EBT-S1556-3Y-2M

Find the most updated information in our Product Selection Software FSS3 at the link:

<https://www.frascold.it/en/software>

CONFIGURATIONS

Standard

Basic configuration, including: compressor, air-cooled condenser, EC fan motors, liquid receiver with shut-off valve, compressor discharge line and base frame.

Standard + Package

The basic configuration is also including: oil separator (supplied without oil charge), the liquid line (filter drier, liquid sight glass and shut-off valve), high and low pressure switch (PED certified, Cat. IV), electrical wiring box.

Accessories

Above mentioned configurations can be completed with other options in the following page.

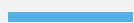
DESCRIPTION	STANDARD	PACKAGE
A,B,D,Q series with direct on line (DOL) electric motor	•	•
Δ connection - 220-240 V / 3 / 50 Hz (265-290 V / 3 / 60 Hz)		
Y Connection -380-420V / 3 / 50 Hz (440-480 V / 3 / 60 Hz)		
S Series with part winding (PWS) electric motor	•	•
Motor windings thermally protected (PTC sensor + electronic control module)	•	•
Suction and discharge valves with soldering connections	•	•
POE 32 cSt lubricante charge	•	•
4 x Rubber vibration dampers	•	•
Cu-Al air cooled condenser	•	•
Condenser fans with EC motors	•	•
IP54 thermally protected fan motor(s) with guard grille	•	•
liquid receiver with rotalock and safety valve (set at 30 bar) mounted	•	•
Discharge line with vibration eliminator	•	•
Nitrogen protective charge	•	•
Packing ensuring proper handling and adequate protection	•	•
A,B,D,Q,S: T00ECA01A - electronic control module (monitors motor windings temperature)	•	•
Standard power supply: AC 40-60 Hz 200-240 V ± 10% 3 VA		
Wide range of motors for all power supplies	•	•
HP/LP pressure switch automatic reset		•
Liquid line with filter drier, sight glass and shut off valve		•
IP56 box for terminals entry (not connected)		•
Oil separator factory assembled and mechanically connected		•

CONSTRUCTION FEATURES AND OPTIONALS

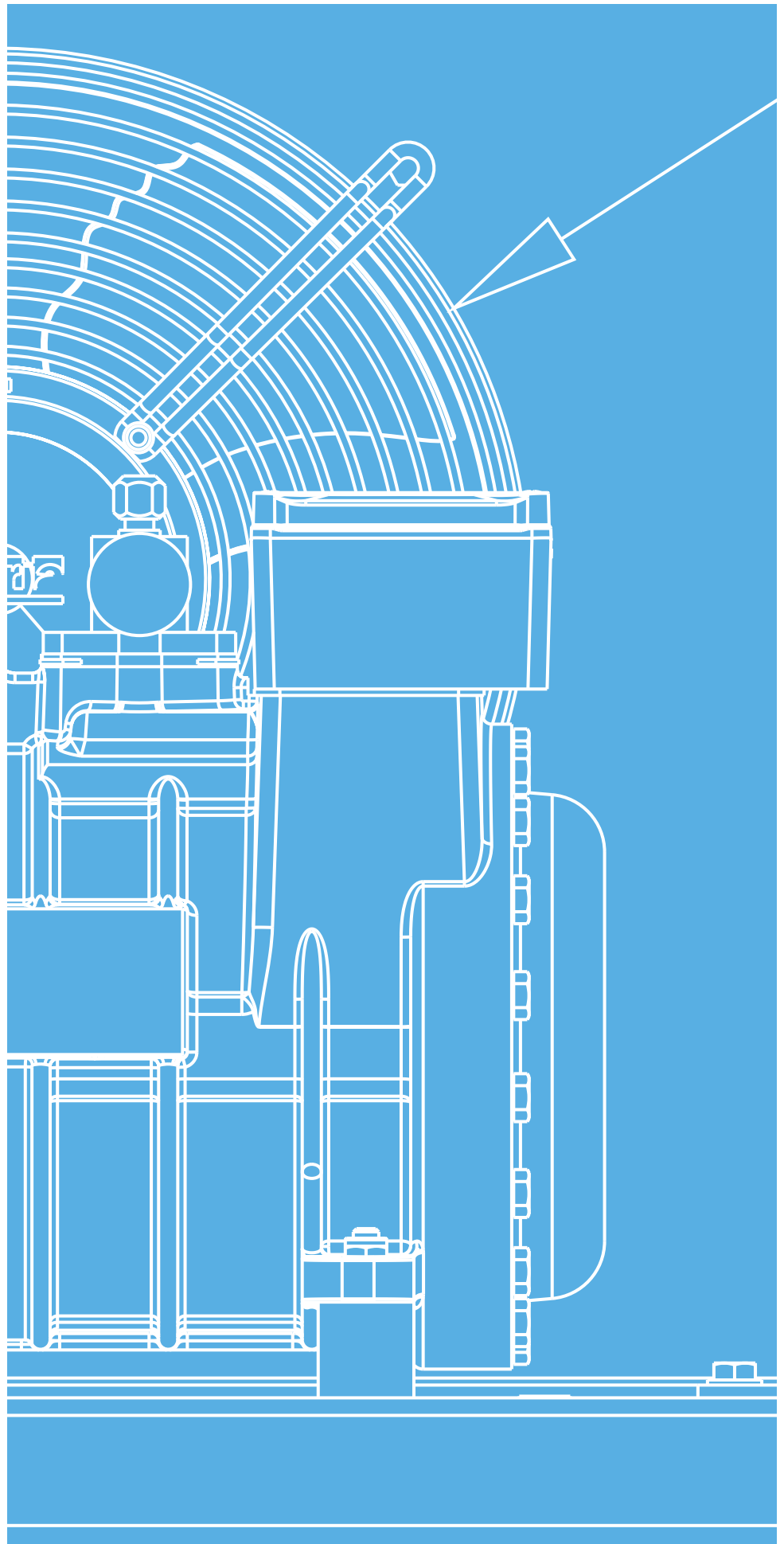
ALL VERSIONS	EB-A...	EBT-A...	EB-B...	EBT-B...	EB-D...	EBT-D...	EB-Q...	EBT-Q...	EB-S...	EBT-S...
STANDARD										
Semi-hermetic compressor with integrated direct start (DOL) electric motor 220-240 V (Δ) / 380-420 V (Y) / 3 / 50 Hz 265-290 V (Δ) / 440-480 V (Y) / 3 / 60 Hz AMS sensors; INT69 protection device; POE oil filling; suction and discharge valves; rubber mounts	•	•	•	•	•	•	•	•		
Semi-hermetic compressor with integrated PWS electric start-up motor 380-420 V / 3 / 50 Hz 440-480 V / 3 / 60 Hz AMS sensors; INT69 protection device; POE oil filling; suction and discharge valves; rubber mounts									•	•
Liquid receiver (PED certified) with large volume, brazing rotalock valve, safety valve (30 bar set-point)	•	•	•	•	•	•	•	•	•	•
Vibration absorber pipe on compressor discharge line		•		•	•	•	•	•	•	•
EC Fans	•	•	•	•	•	•	•	•	•	•
PACKAGE										
High/Low safety pressure switch (PED certified, Cat. IV)	•	•	•	•	•	•	•	•	•	•
Liquid line(filter, liquid sight glass, shut-off valve)	•	•	•	•	•	•	•	•	•	•
Oil separator (supplied without oil charge)	•	•	•	•	•	•	•	•	•	•
Electrical wiring box (Not connected)	•	•	•	•	•	•	•	•	•	•
OPTIONALS (forniti separatamente)										
Discharge temperature control sensor							•	•	•	•
Fan motor speed regulation device for EC fans (8-25 bar and 5-15 bar models)	•	•	•	•	•	•	•	•	•	•
Solenoid valve for liquid line	•	•	•	•	•	•	•	•	•	•
Check-valve for compressor discharge line supplied separately	•	•	•	•	•	•	•		•	
Protecting Housing for outdoor installation supplied separately	•	•	•	•	•	•	•	•	•	•

TECHNICAL DRAWINGS AND DIMENSIONS

20



EB - EBT Series



DRAWING KEY



AC	Air-cooled condenser
AF	Fan motor
DV	Discharge valve
LR	Liquid receiver
LRV	Liquid receiver shut-off valve
S	Safety valve / Safety valve connection
SV	Suction valve
OS	Oil separator
EB	Electric wiring box
HL	High/low pressure switch
LL	Liquid line

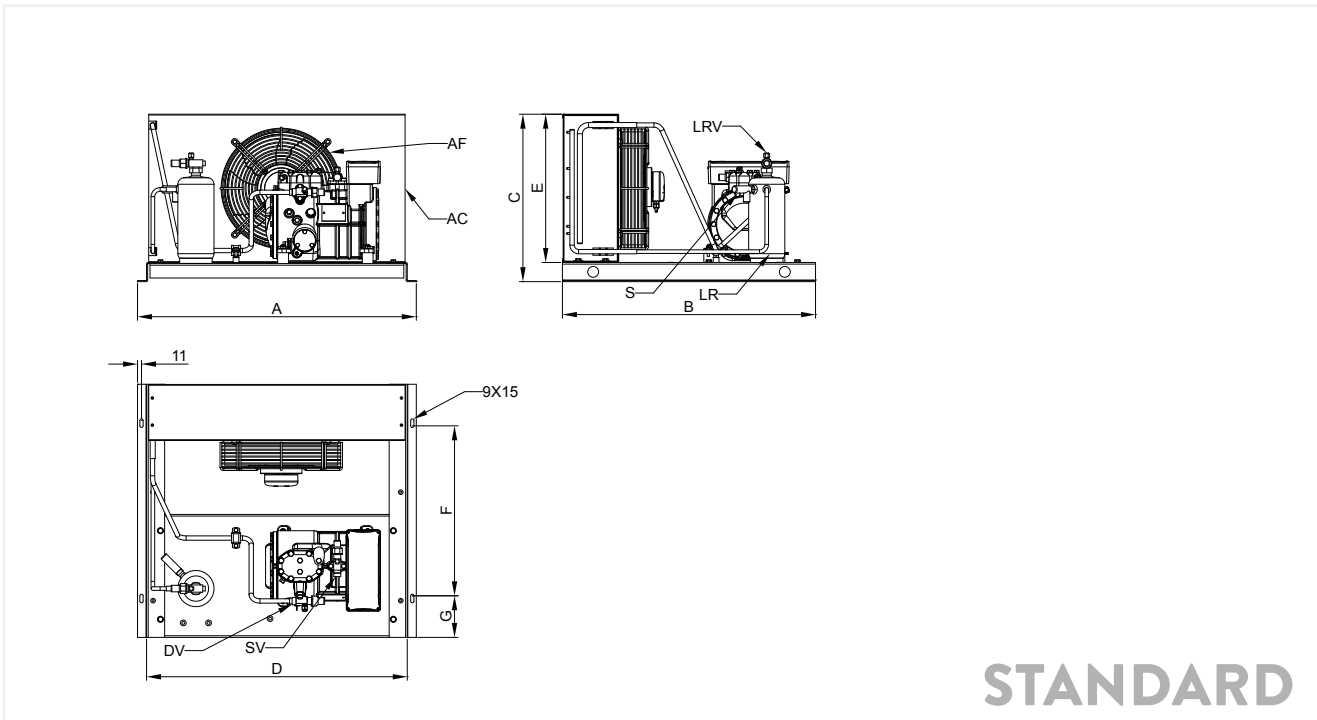
STANDARD

PACKAGE

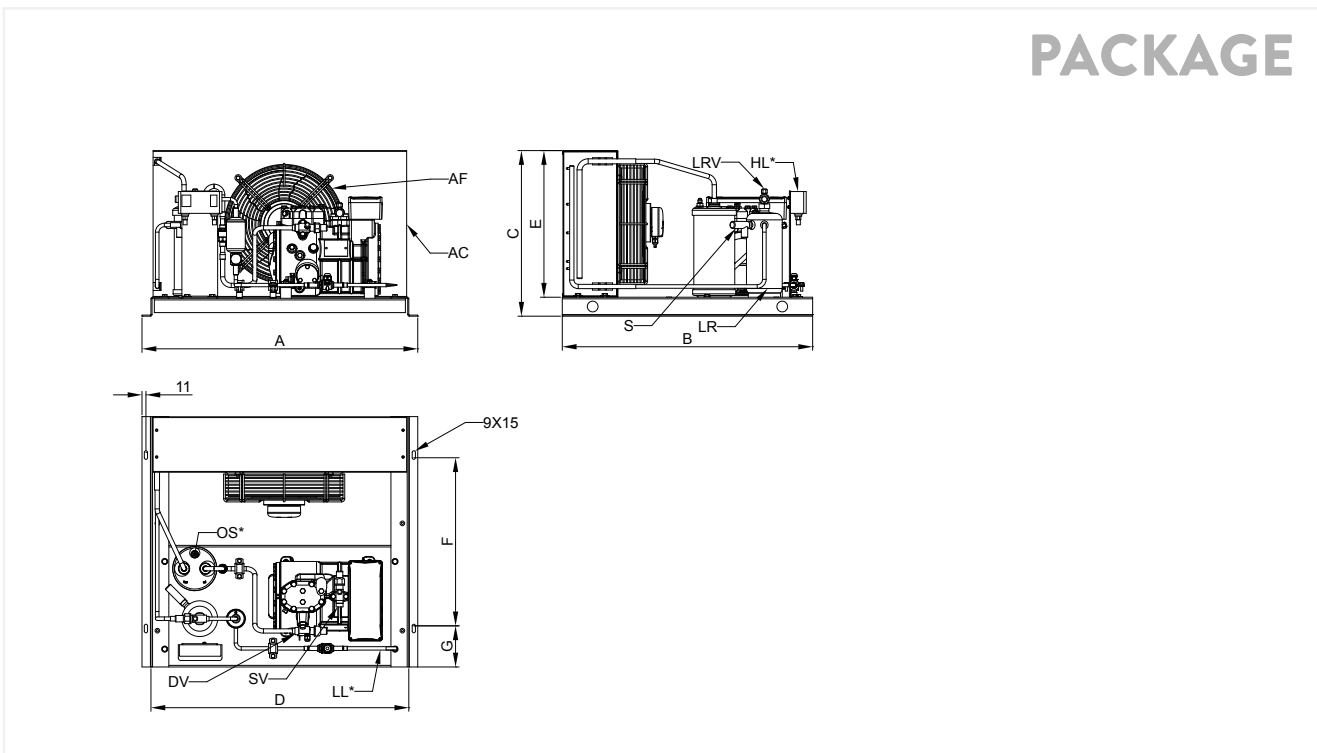


Dimensional drawing
Standard models

	Standard construction						Unit with housing				
	Overall dimensions			Condenser dimensions		Fixing holes		Overall dimensions			Housing weight
	A	B	C	D	E	F	G	A	B	C	
	[mm]	[mm]	[mm]	[mm]	[mm]	[mm]	[mm]	[mm]	[mm]	[mm]	[kg]
EB-A054-0Y-1M											
EB-A075-0Y-1M											
EB-A16-0Y-1M	771	660	463	721	410	470	115	771	684	486	22
EB-A17-0Y-1M											
EB-B159-0Y-1M											

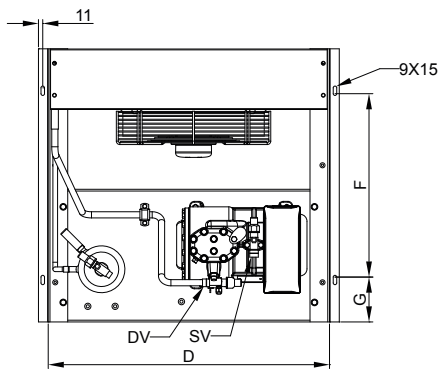
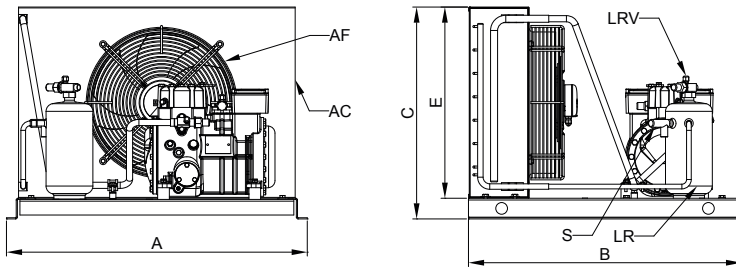


STANDARD
PACKAGE

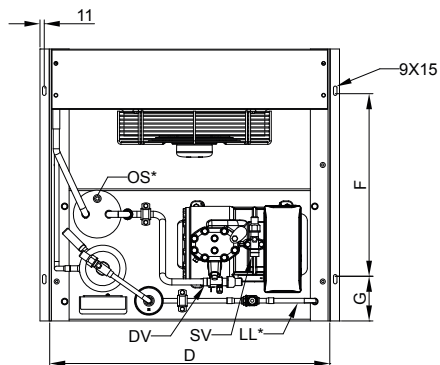
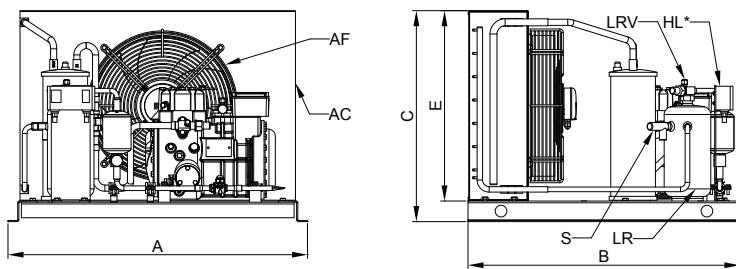


Dimensional drawing

	Standard construction						Unit with housing				
	Overall dimensions			Condenser dimensions		Fixing holes		Overall dimensions			Housing weight
	A	B	C	D	E	F	G	A	B	C	[kg]
	[mm]	[mm]	[mm]	[mm]	[mm]	[mm]	[mm]	[mm]	[mm]	[mm]	[mm]
EB-A157-0Y-1M	771	660	543	721	490	470	115	771	684	566	25
EB-B210-0Y-1M											

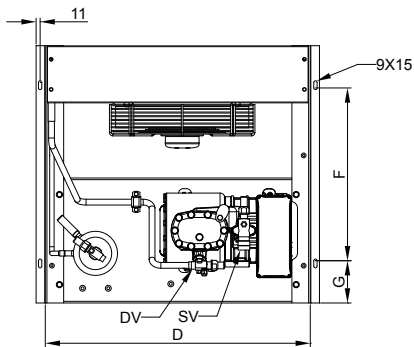
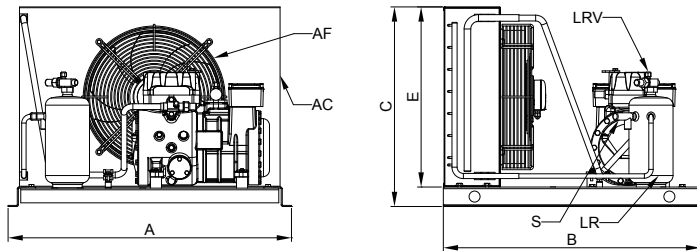


**STANDARD
PACKAGE**

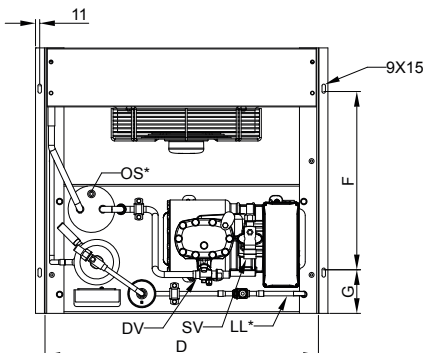
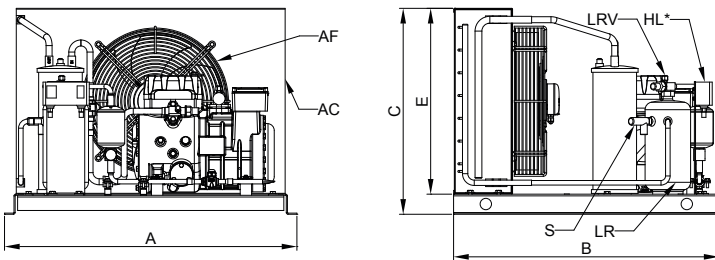


Dimensional drawing

	Standard construction						Unit with housing				
	Overall dimensions			Condenser dimensions		Fixing holes		Overall dimensions			Housing weight
	A	B	C	D	E	F	G	A	B	C	
	[mm]	[mm]	[mm]	[mm]	[mm]	[mm]	[mm]	[mm]	[mm]	[mm]	[kg]
EB-D211-0Y-1M											
EB-D213-0Y-1M	771	660	543	721	490	470	115	771	684	566	25
EB-D313-0Y-1M											

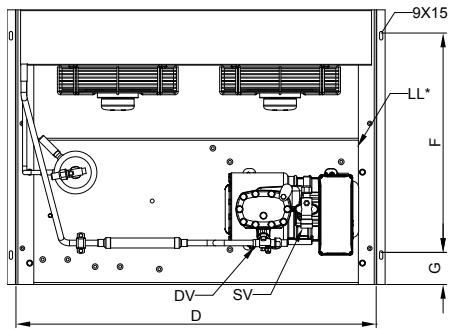
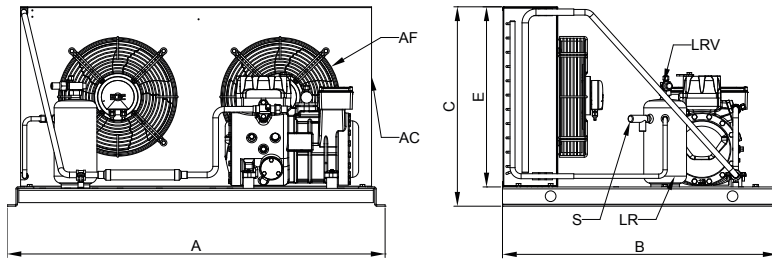


STANDARD PACKAGE



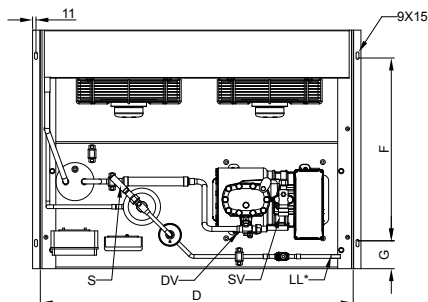
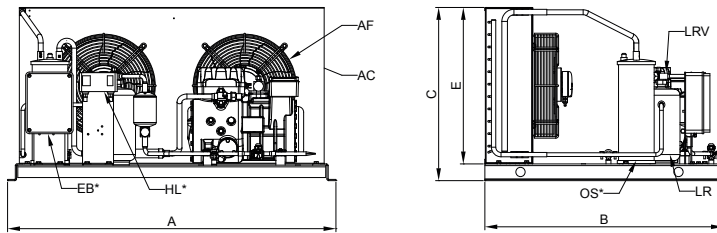
Dimensional drawing

	Standard construction						Unit with housing				
	Overall dimensions			Condenser dimensions		Fixing holes		Overall dimensions			Housing weight
	A	B	C	D	E	F	G	A	B	C	[kg]
	[mm]	[mm]	[mm]	[mm]	[mm]	[mm]	[mm]	[mm]	[mm]	[mm]	[mm]
EB-D316-0Y-2M	1060	770	559	1010	505	600	90	1060	795	583	32
EB-D318-0Y-2M											



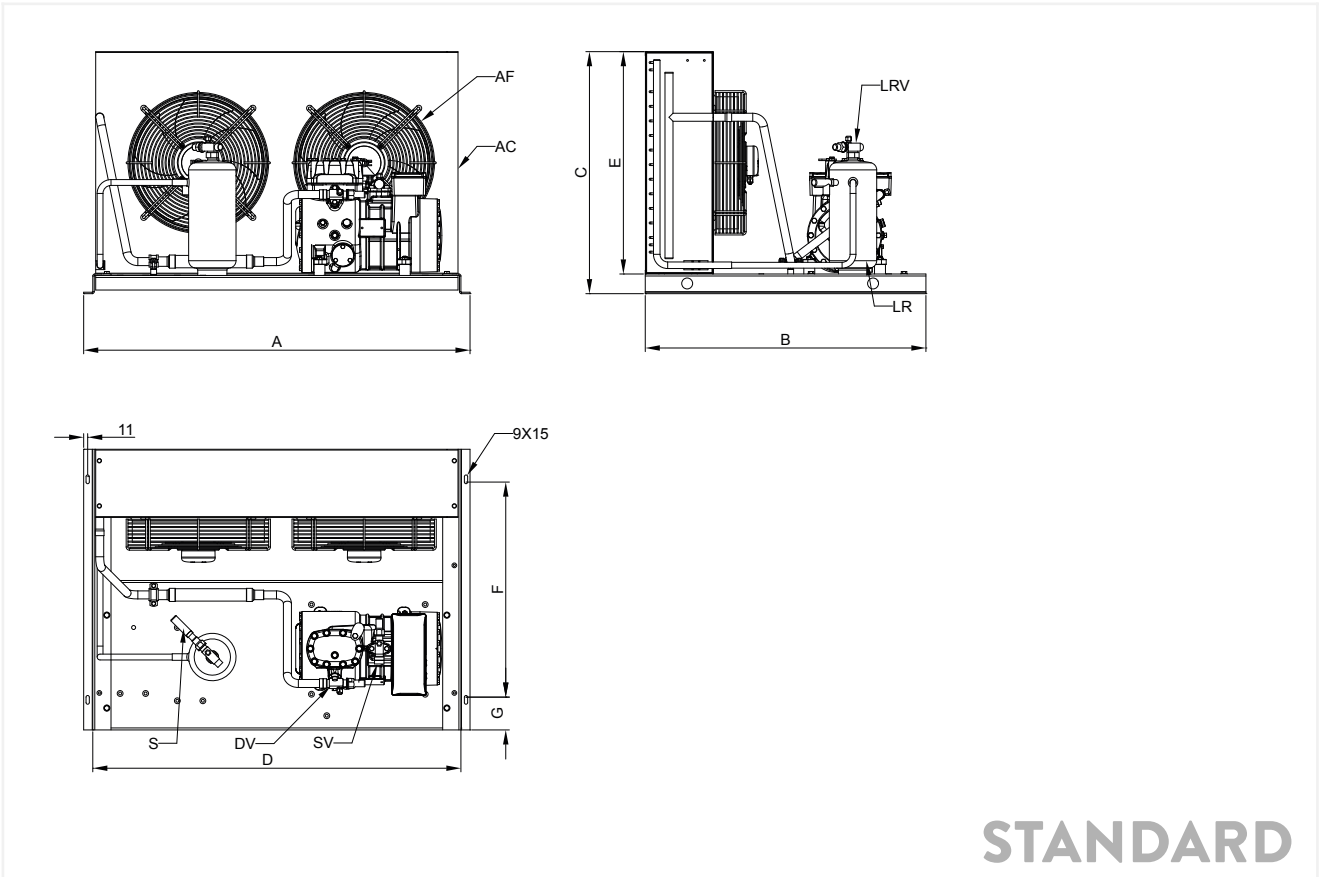
26

STANDARD PACKAGE

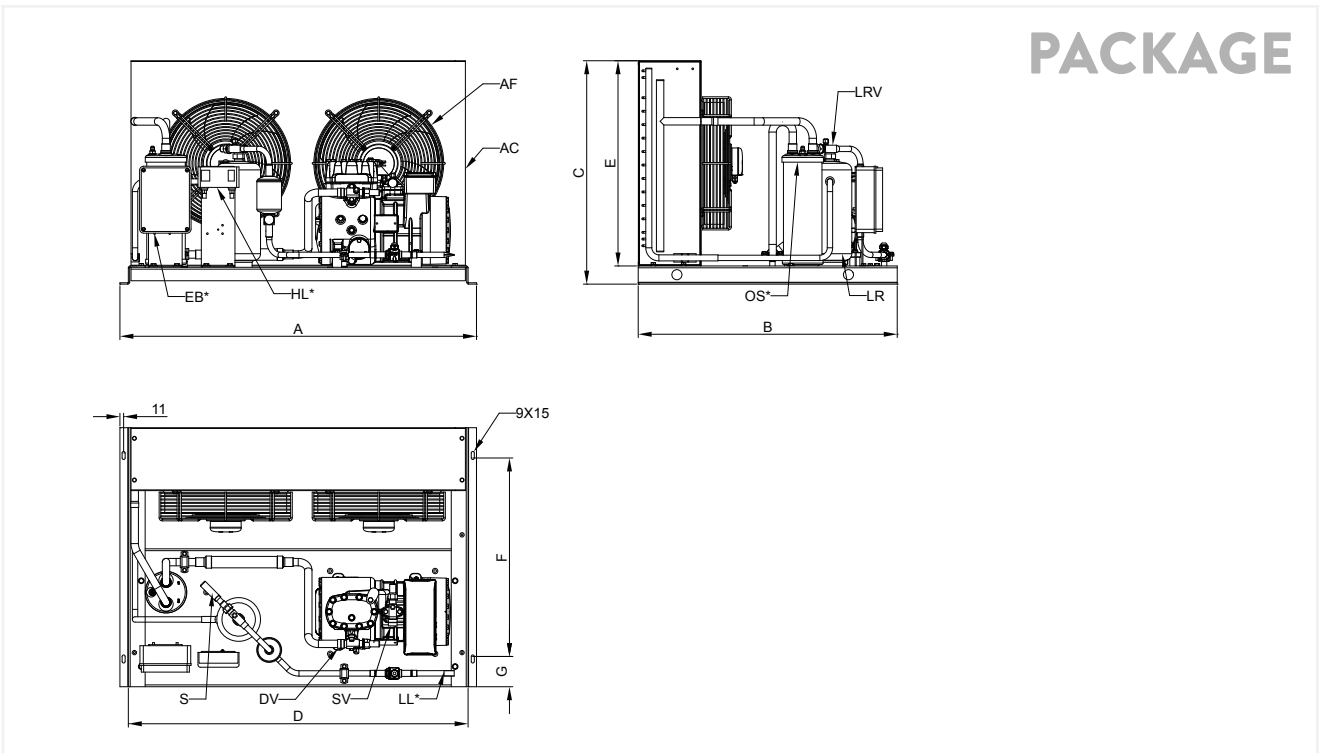


Dimensional drawing

	Standard construction						Unit with housing				
	Overall dimensions			Condenser dimensions		Fixing holes		Overall dimensions			Housing weight
	A	B	C	D	E	F	G	A	B	C	[kg]
	[mm]	[mm]	[mm]	[mm]	[mm]	[mm]	[mm]	[mm]	[mm]	[mm]	
EB-D416-0Y-2M	1060	770	664	1010	610	600	90	1060	795	688	36

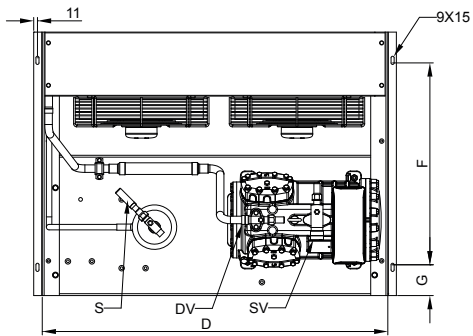
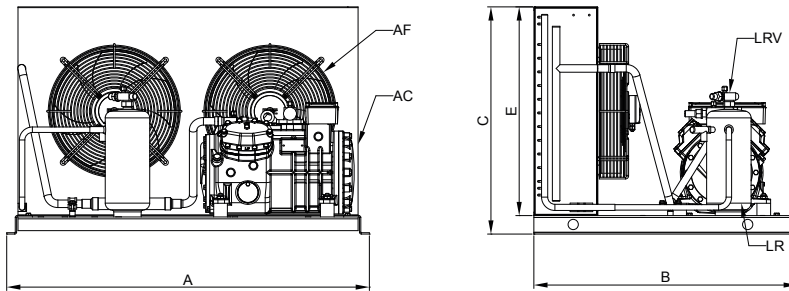


STANDARD PACKAGE



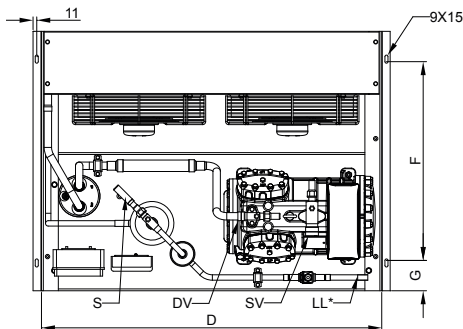
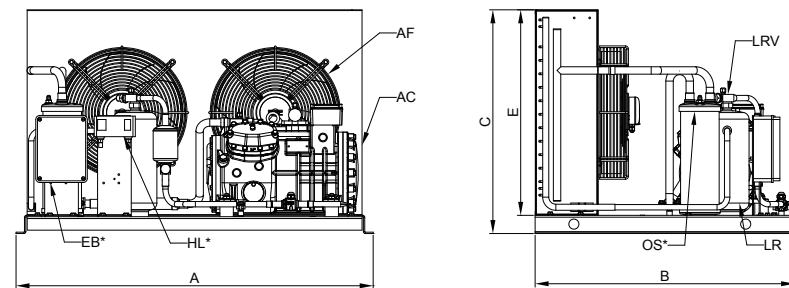
Dimensional drawing

	Standard construction						Unit with housing				
	Overall dimensions			Condenser dimensions		Fixing holes		Overall dimensions			Housing weight
	A	B	C	D	E	F	G	A	B	C	[kg]
	[mm]	[mm]	[mm]	[mm]	[mm]	[mm]	[mm]	[mm]	[mm]	[mm]	
EB-Q420-0Y-2M	1060	770	664	1010	610	600	90	1060	795	668	36
EB-Q424-0Y-2M											
EB-Q524-0Y-2M											
EB-Q528-0Y-2M											



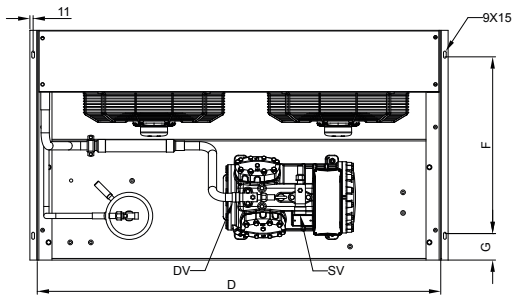
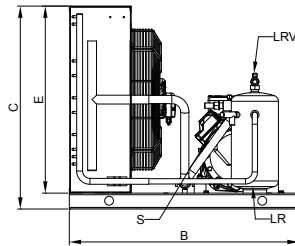
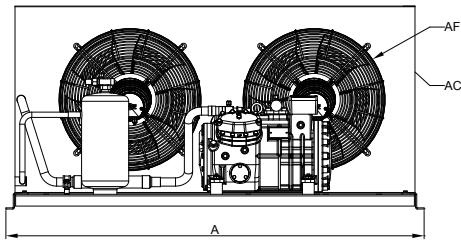
STANDARD

PACKAGE

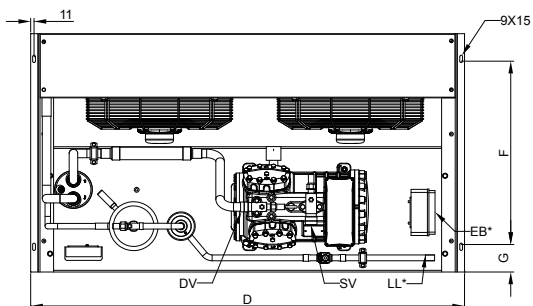
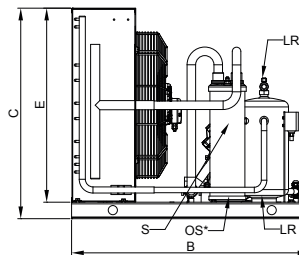
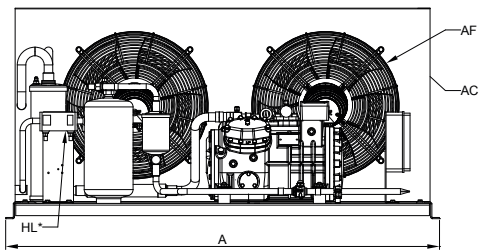


Dimensional drawing

	Standard construction						Unit with housing				
	Overall dimensions			Condenser dimensions		Fixing holes		Overall dimensions			Housing weight
	A	B	C	D	E	F	G	A	B	C	[kg]
	[mm]	[mm]	[mm]	[mm]	[mm]	[mm]	[mm]	[mm]	[mm]	[mm]	
EB-Q521-0Y-2M	1420	780	689	1370	635	600	80	1420	804	713	44
EB-Q533-0Y-2M											
EB-Q536-0Y-2M											
EB-Q728-0Y-2M											
EB-Q733-0Y-2M											
EB-Q736-0Y-2M											

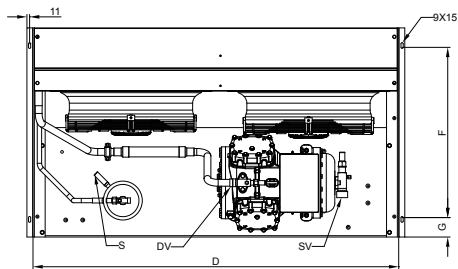
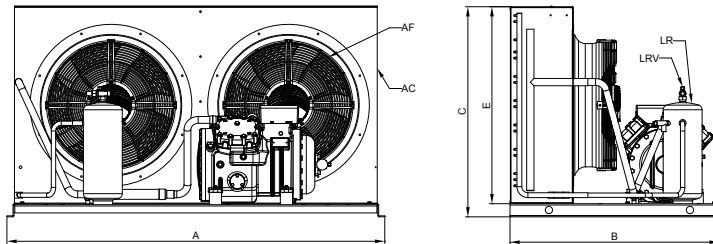


STANDARD PACKAGE

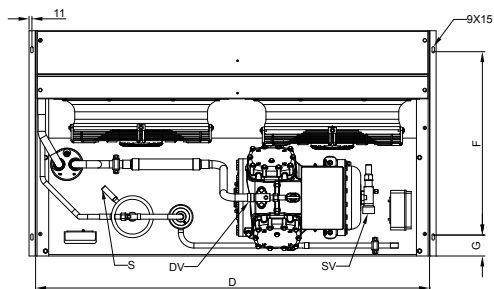
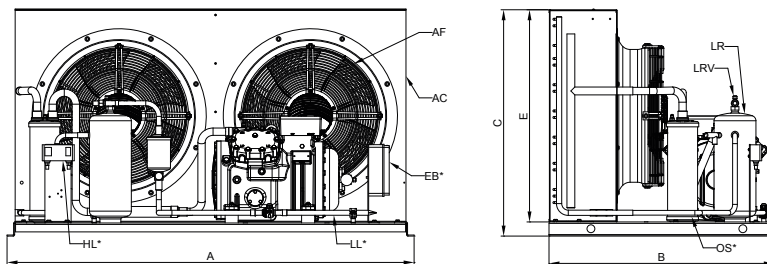


Dimensional drawing

	Standard construction						Unit with housing				
	Overall dimensions			Condenser dimensions		Fixing holes		Overall dimensions			Housing weight
	A	B	C	D	E	F	G	A	B	C	
	[mm]	[mm]	[mm]	[mm]	[mm]	[mm]	[mm]	[mm]	[mm]	[mm]	[kg]
EB-S842-3Y-2M	1556	869	867	1504	813	700	80	1556	884	888	57
EB-S1052-3Y-2M											
EB-S1242-3Y-2M											
EB-S1552-3Y-2M											
EB-S1556-3Y-2M											

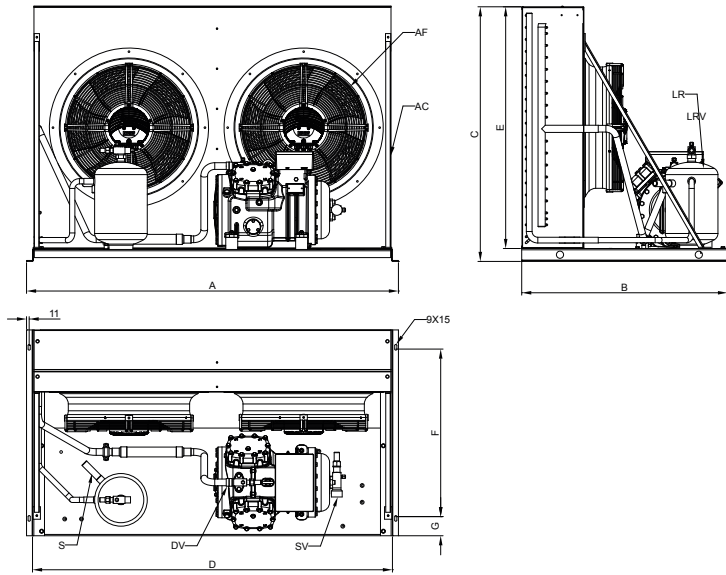


STANDARD PACKAGE

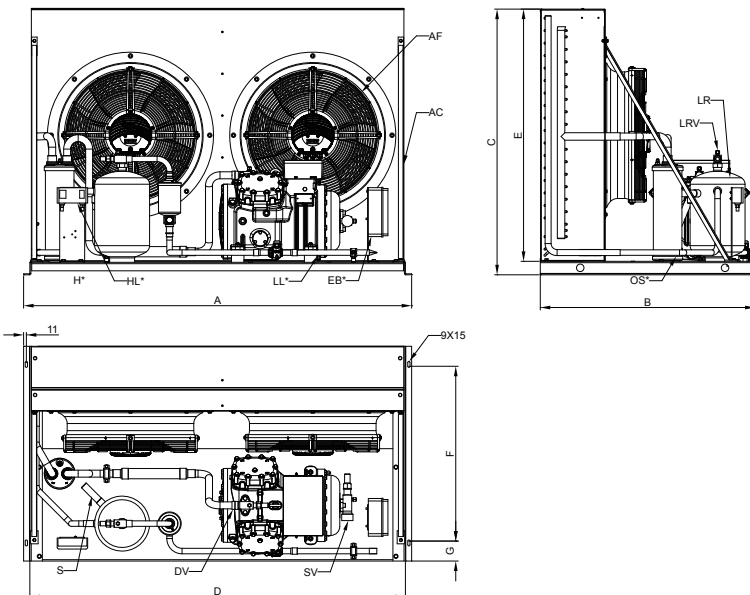


Dimensional drawing

	Standard construction						Unit with housing				
	Overall dimensions			Condenser dimensions		Fixing holes		Overall dimensions			Housing weight
	A	B	C	D	E	F	G	A	B	C	
	[mm]	[mm]	[mm]	[mm]	[mm]	[mm]	[mm]	[mm]	[mm]	[mm]	[kg]
EB-S2056-3Y-2M	1556	860	1062	1504	1013	700	80	1556	884	1089	65



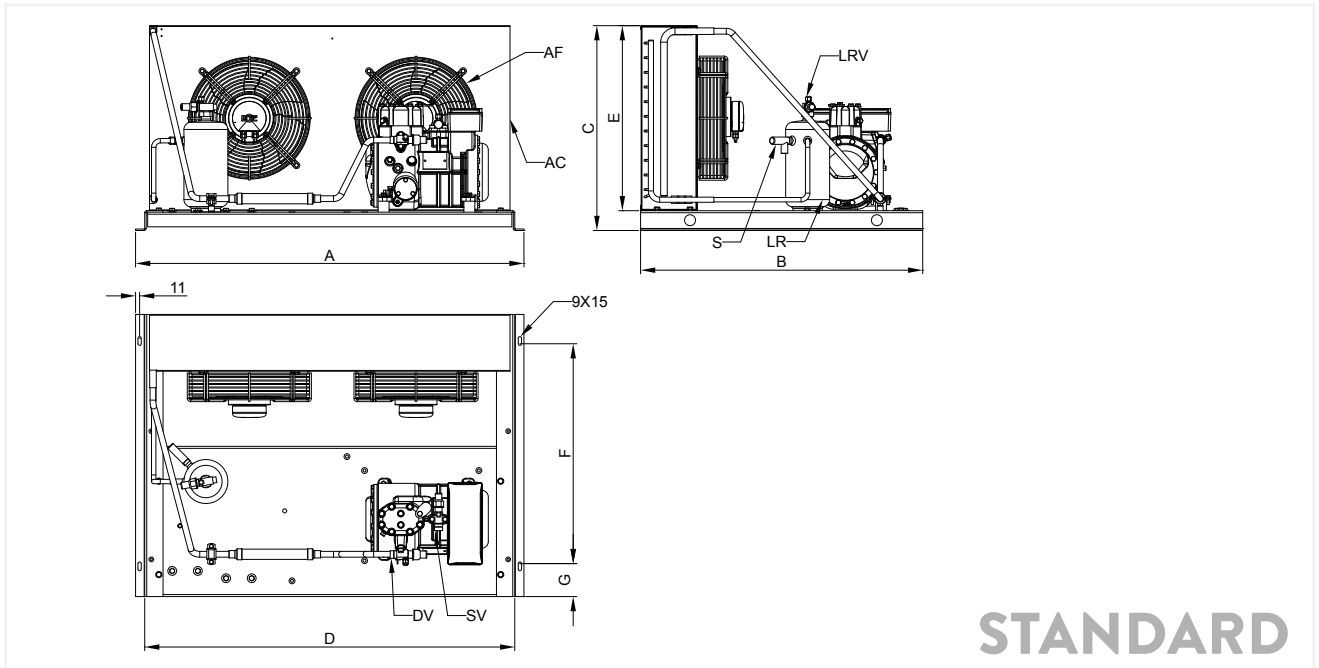
STANDARD PACKAGE



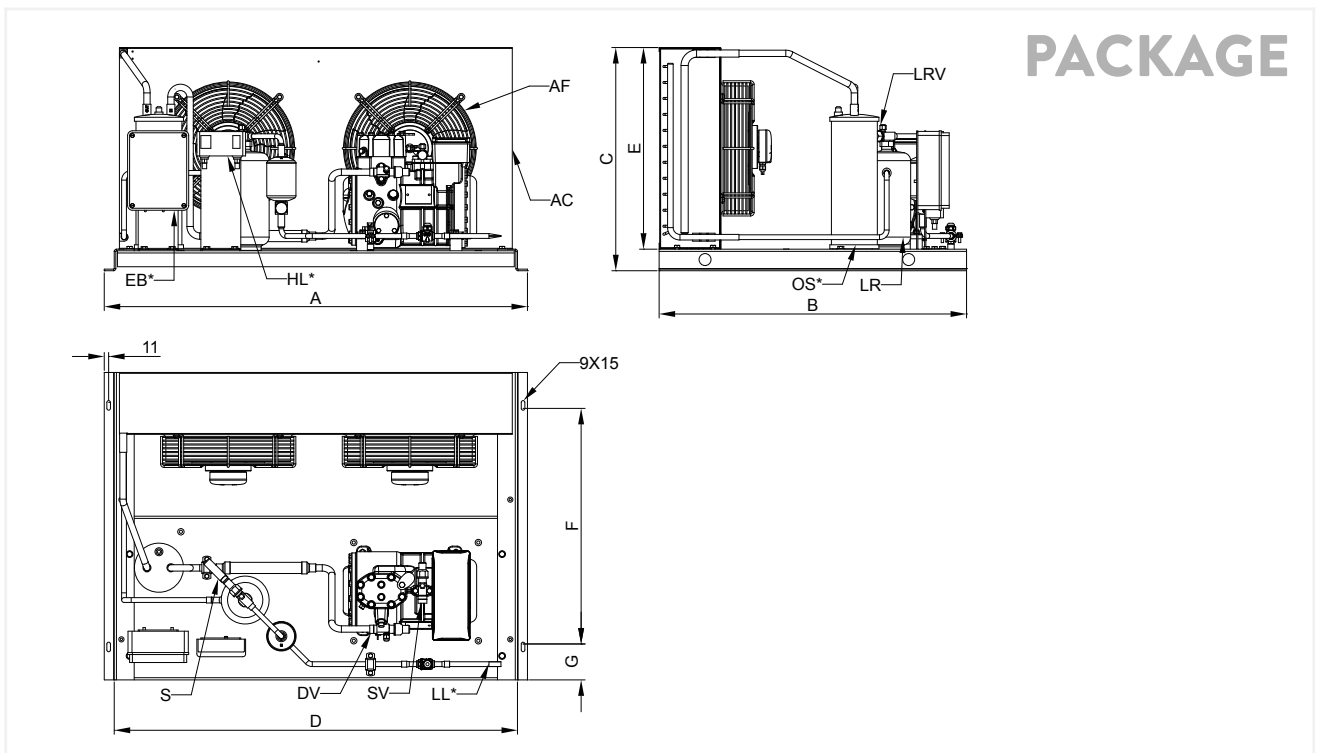
Dimensional drawing

Tropicalized models

	Standard construction						Unit with housing				
	Overall dimensions			Condenser dimensions		Fixing holes		Overall dimensions			Housing weight
	A	B	C	D	E	F	G	A	B	C	[kg]
	[mm]	[mm]	[mm]	[mm]	[mm]	[mm]	[mm]	[mm]	[mm]	[mm]	
EBT-A054-0Y-2M	1060	770	559	1010	505	600	90	1060	795	583	32
EBT-A075-0Y-2M											
EBT-A16-0Y-2M											
EBT-A17-0Y-2M											
EBT-B159-0Y-2M											
EBT-B210-0Y-2M											

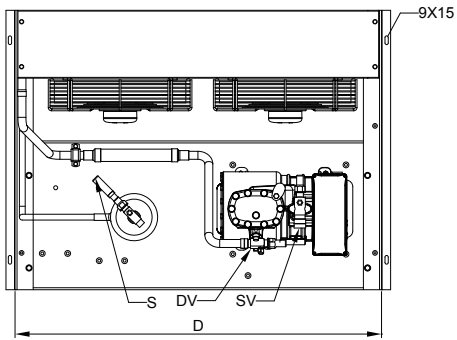
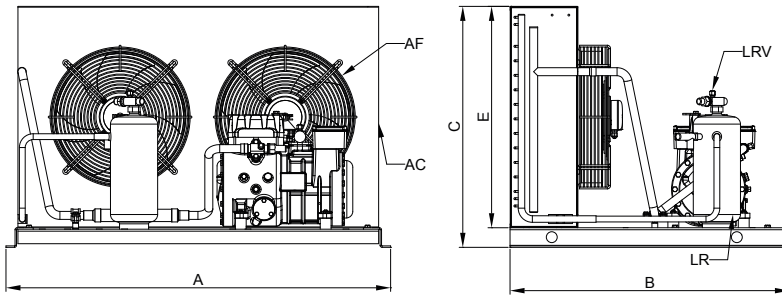


32

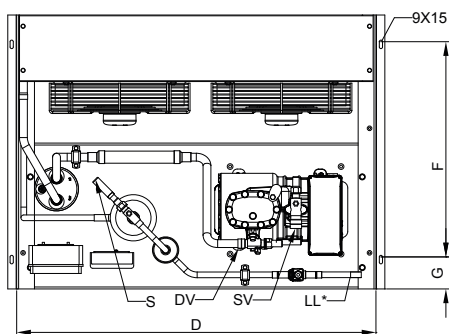
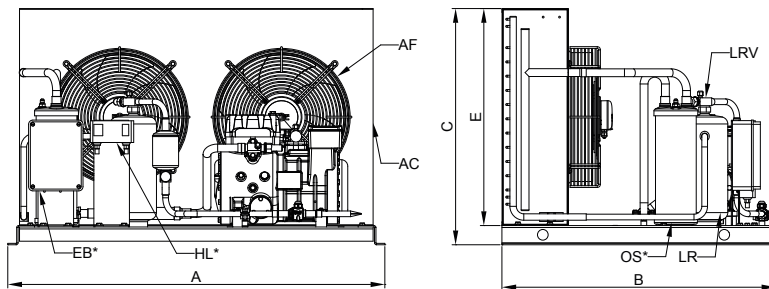


Dimensional drawing

	Standard construction						Unit with housing				
	Overall dimensions			Condenser dimensions		Fixing holes		Overall dimensions			Housing weight
	A	B	C	D	E	F	G	A	B	C	[kg]
	[mm]	[mm]	[mm]	[mm]	[mm]	[mm]	[mm]	[mm]	[mm]	[mm]	
EBT-D211-0Y-2M	1060	770	664	1010	610	600	90	1060	795	688	36
EBT-D213-0Y-2M											
EBT-D313-0Y-2M											
EBT-D316-0Y-2M											
EBT-D318-0Y-2M											

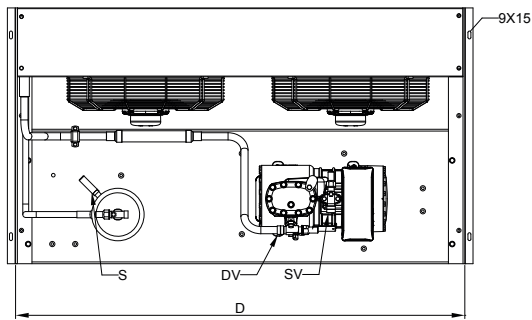
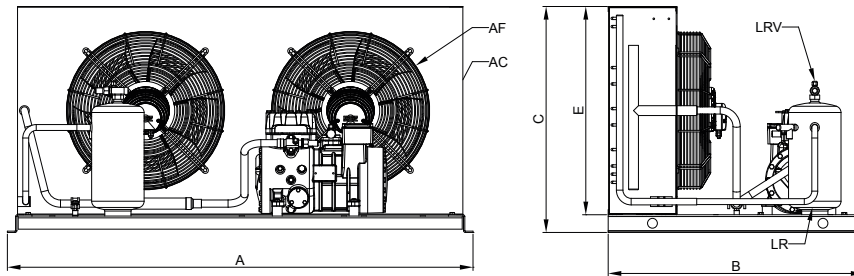


STANDARD PACKAGE



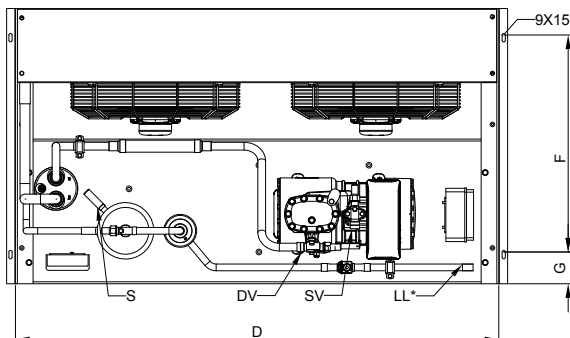
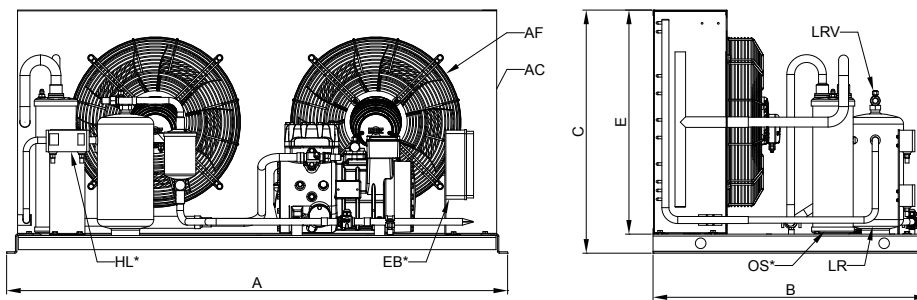
Dimensional drawing

	Standard construction						Unit with housing				
	Overall dimensions			Condenser dimensions		Fixing holes		Overall dimensions			Housing weight
	A	B	C	D	E	F	G	A	B	C	[kg]
	[mm]	[mm]	[mm]	[mm]	[mm]	[mm]	[mm]	[mm]	[mm]	[mm]	[mm]
EBT-D416-0Y-2M	1420	780	689	1370	635	600	80	1420	804	713	44
EBT-D418-0Y-2M											



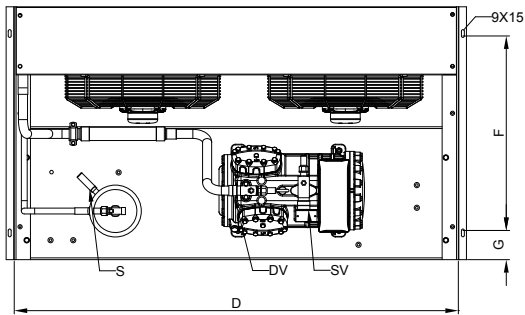
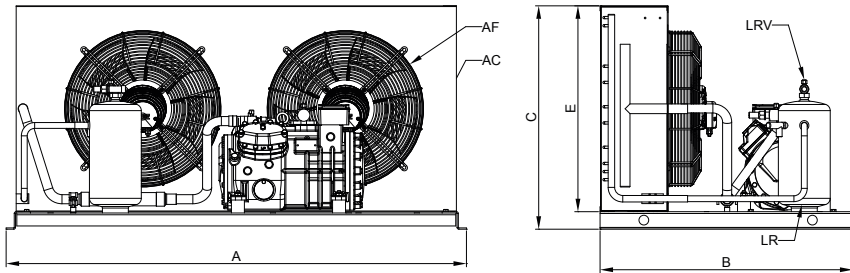
STANDARD

PACKAGE

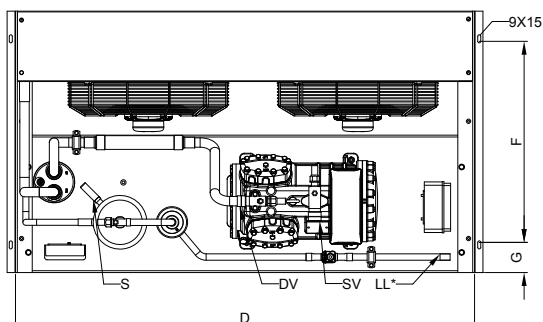
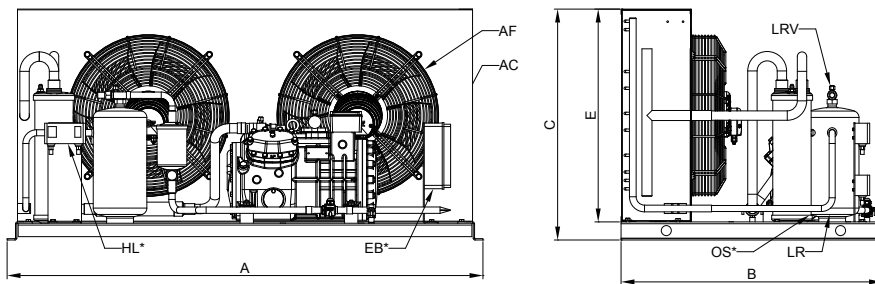


Dimensional drawing

	Standard construction						Unit with housing				
	Overall dimensions			Condenser dimensions		Fixing holes		Overall dimensions			Housing weight
	A	B	C	D	E	F	G	A	B	C	[kg]
	[mm]	[mm]	[mm]	[mm]	[mm]	[mm]	[mm]	[mm]	[mm]	[mm]	
EBT-Q420-0Y-2M	1420	780	689	1370	635	600	80	1420	804	713	44
EBT-Q424-0Y-2M											
EBT-Q524-0Y-2M											
EBT-Q528-0Y-2M											

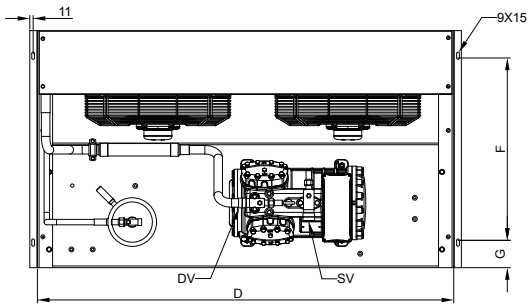
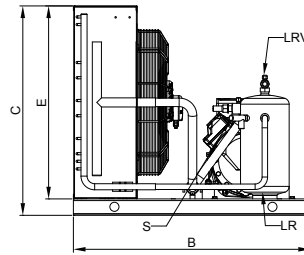
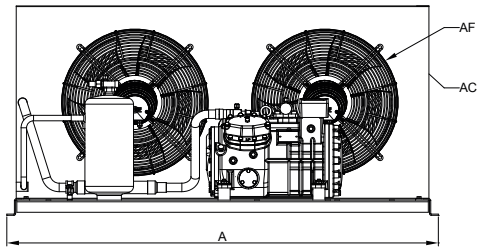


STANDARD PACKAGE



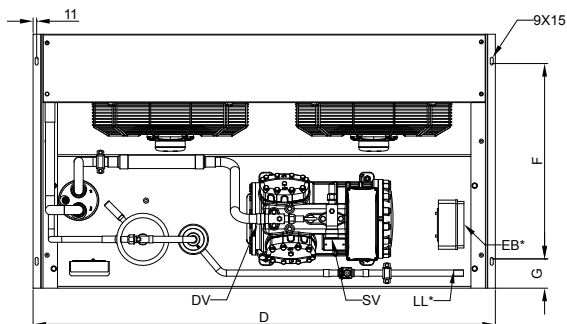
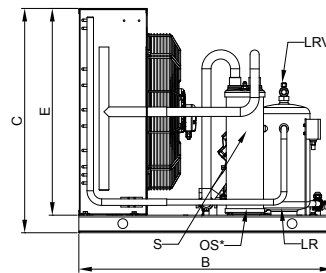
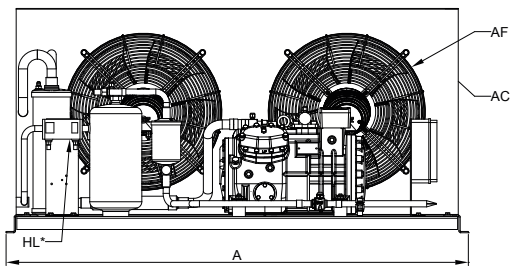
Dimensional drawing

	Standard construction						Unit with housing				
	Overall dimensions			Condenser dimensions		Fixing holes		Overall dimensions			Housing weight
	A	B	C	D	E	F	G	A	B	C	[kg]
	[mm]	[mm]	[mm]	[mm]	[mm]	[mm]	[mm]	[mm]	[mm]	[mm]	
EBT-Q521-0Y-2M	1556	860	867	1504	813	700	80	1556	884	888	57
EBT-Q533-0Y-2M											
EBT-Q536-0Y-2M											
EBT-Q728-0Y-2M											
EBT-Q733-0Y-2M											
EBT-Q736-0Y-2M											



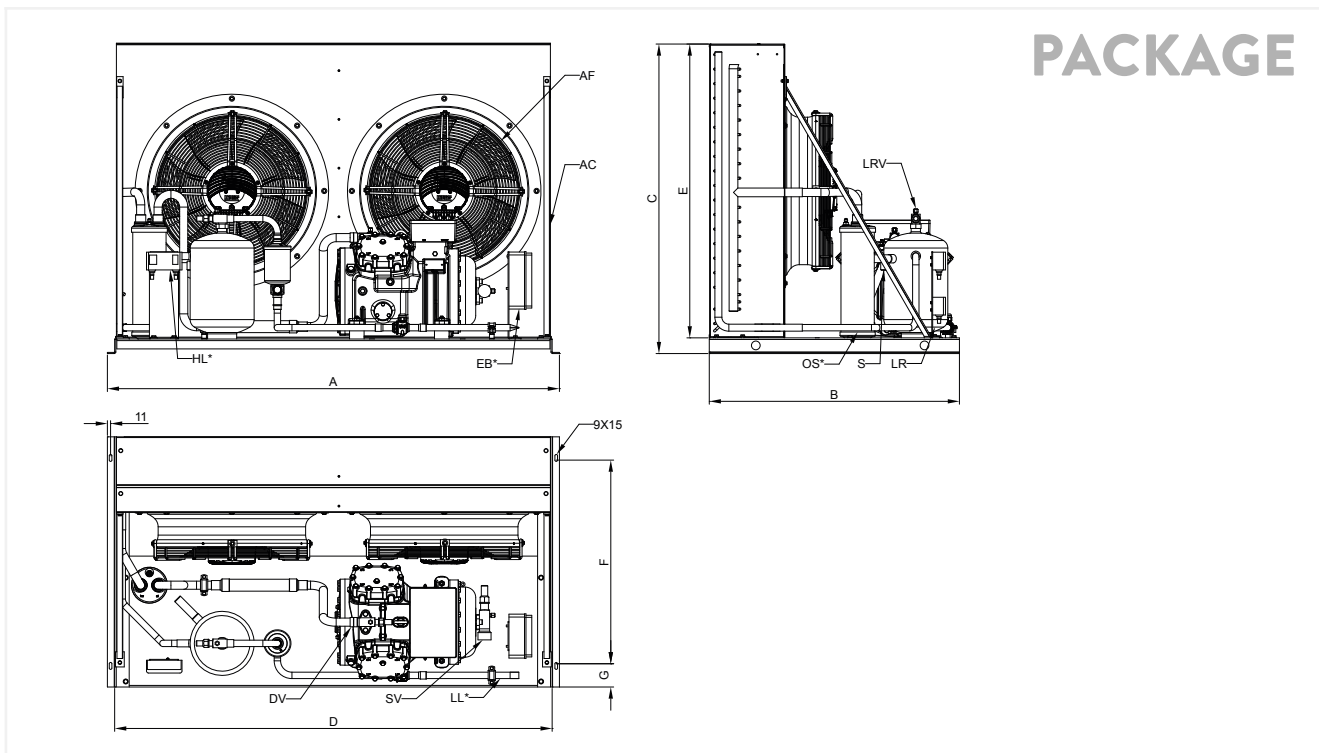
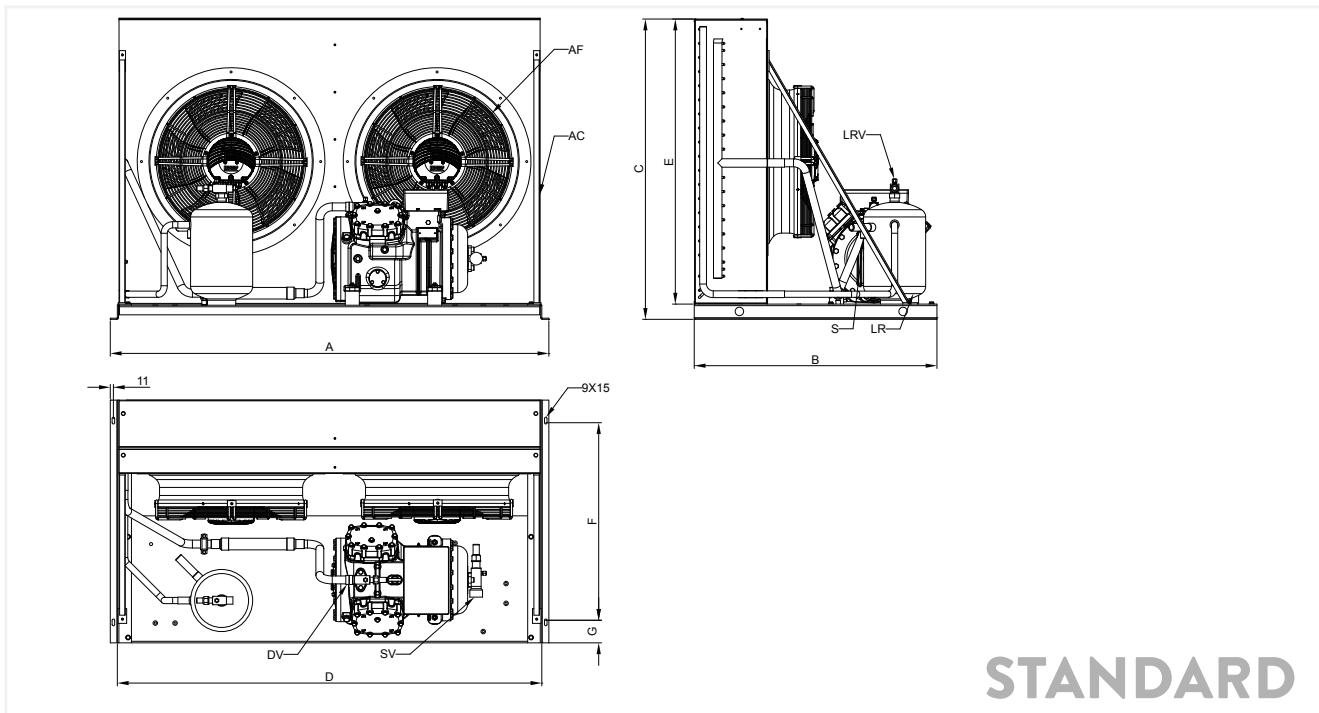
STANDARD

PACKAGE



Dimensional drawing

	Standard construction						Unit with housing				
	Overall dimensions			Condenser dimensions		Fixing holes		Overall dimensions			Housing weight
	A	B	C	D	E	F	G	A	B	C	[kg]
	[mm]	[mm]	[mm]	[mm]	[mm]	[mm]	[mm]	[mm]	[mm]	[mm]	
EBT-S842-3Y-2M	1556	860	1062	1504	1013	700	80	1556	884	1089	65
EBT-S1052-3Y-2M											
EBT-S1242-3Y-2M											
EBT-S1552-3Y-2M											
EBT-S1556-3Y-2M											



Technical dimensions

STANDARD	Installation/transp.		Installation/transp.		Packaging	
	STANDARD		PACKAGE		Dimensions (LxWxH)	Volume
	Net weight	Gross weight	Net weight	Gross weight		
	[kg]	[kg]	[kg]	[kg]	[cm]	[dm ³]
EB-A054-0Y-1M	67	75	69	77	87x71x60	377
EB-A075-0Y-1M	67	75	69	77	87x71x60	377
EB-A16-0Y-1M	67	75	69	77	87x71x60	377
EB-A17-0Y-1M	67	75	69	77	87x71x60	377
EB-A157-0Y-1M	67	75	69	77	87x71x60	377
EB-B159-0Y-1M	69	77	71	79	87x71x60	377
EB-B210-0Y-1M	71	79	73	81	87x71x60	377
EB-D211-0Y-1M	97	107	100	110	110x85x85	795
EB-D213-0Y-1M	97	107	100	134	110x85x85	795
EB-D313-0Y-1M	97	107	124	140	110x85x85	795
EB-D316-0Y-2M	108	118	130	114	110x85x85	795
EB-D318-0Y-2M	114	124	110	120	110x85x85	795
EB-D416-0Y-2M	116	126	118	128	110x85x85	795
EB-Q420-0Y-2M	135	145	137	147	110x85x85	795
EB-Q424-0Y-2M	140	150	142	152	110x85x85	795
EB-Q524-0Y-2M	140	150	142	152	110x85x85	795
EB-Q528-0Y-2M	140	150	142	152	110x85x85	795
EB-Q533-0Y-2M	161	176	187	202	149x88x88	1154
EB-Q521-0Y-2M	161	176	187	202	149x88x88	1154
EB-Q536-0Y-2M	161	176	187	202	149x88x88	1154
EB-Q728-0Y-2M	161	176	187	202	149x88x88	1154
EB-Q733-0Y-2M	161	176	187	202	149x88x88	1154
EB-Q736-0Y-2M	161	176	187	202	149x88x88	1154
EB-S842-3Y-2M	250	270	253	273	161x108x125	2174
EB-S1052-3Y-2M	253	273	256	276	161x108x125	2174
EB-S1242-3Y-2M	253	273	256	276	161x108x125	2174
EB-S1552-3Y-2M	259	279	262	282	161x108x125	2174
EB-S1556-3Y-2M	263	283	266	286	161x108x125	2174
EB-S2056-3Y-2M	286	306	289	309	161x108x125	2174

CDU TROPICALIZED	Installation/transp.		Installation/transp.		Packaging	
	STANDARD		PACKAGE		Dimensions (LxWxH)	Volume
	Net weight	Gross weight	Net weight	Gross weight		
	[kg]	[kg]	[kg]	[kg]	[cm]	[dm ³]
EBT-A054-0Y-2M	88	98	92	101	110x85x85	795
EBT-A075-0Y-2M	88	98	92	101	110x85x85	795
EBT-A16-0Y-2M	88	98	92	101	110x85x85	795
EBT-A17-0Y-2M	88	98	92	101	110x85x85	795
EBT-A157-0Y-2M	88	98	92	101	110x85x85	795
EBT-B159-0Y-2M	90	100	94	103	110x85x85	795
EBT-B210-0Y-2M	92	102	96	105	110x85x85	795
EBT-D211-0Y-2M	106	116	112	121	110x85x85	795
EBT-D213-0Y-2M	106	116	112	121	110x85x85	795
EBT-D318-0Y-2M	116	126	122	131	110x85x85	795
EBT-D313-0Y-2M	106	116	112	121	110x85x85	795
EBT-D316-0Y-2M	110	120	116	125	110x85x85	795
EBT-D416-0Y-2M	144	159	150	164	149x88x88	1154
EBT-D418-0Y-2M	144	159	150	164	149x88x88	1154
EBT-Q420-0Y-2M	168	183	177	191	149x88x88	1154
EBT-Q424-0Y-2M	168	183	177	191	149x88x88	1154
EBT-Q524-0Y-2M	168	183	177	191	149x88x88	1154
EBT-Q528-0Y-2M	168	183	177	191	149x88x88	1154
EBT-Q533-0Y-2M	212	232	220	240	161x108x125	2174
EBT-Q521-0Y-2M	212	232	220	240	161x108x125	2174
EBT-Q728-0Y-2M	212	232	220	240	161x108x125	2174
EBT-Q733-0Y-2M	212	232	220	240	161x108x125	2174
EBT-Q736-0Y-2M	212	232	220	240	161x108x125	2174
EBT-S842-3Y-2M	271	291	281	300	161x108x125	2174
EBT-S1242-3Y-2M	274	294	284	303	161x108x125	2174
EBT-S1052-3Y-2M	274	294	284	303	161x108x125	2174
EBT-S1552-3Y-2M	280	300	290	309	161x108x125	2174
EBT-S1556-3Y-2M	284	304	294	313	161x108x125	2174

CONTACT & SUBSIDIARIES



40



HEADQUARTERS & PRODUCTION PLANT

FRASCOLD SPA - ITALY, MILAN

Via B. Melzi 105, 20027 Rescaldina (MI) Italy
Tel. +39 0331 742201 - Fax +39 0331 576102
frascold@frascold.it - www.frascold.it

SALES OFFICE

FRASCOLD CHINA

Frascold Refrigeration Co. Ltd
Room 612, 6th Floor,
Jinqiao Life Hub, No.3611
Zhangyang Road, New Pudong District,
Shanghai, CHINA
Ph. +86 021 58650192 / 58650180
Fax +86 021 58650180 - frascold.china@frascold.net

FRASCOLD INDIA PVT LTD

Frascold India Pvt Ltd.
A1/2/14/15, Gallops Industrial Park,
NH-8A, Sarkhej-Bavla Road, Rajoda,
Ahmedabad 382220 Gujarat. INDIA
Ph: +91 2717 685858,
sales@frascoldindia.com - www.frascoldindia.com

FRASCOLD USA

5343 Bowden Road, Suite 2
Jacksonville, FL 32216 - Ph. +1 (855) 547 5600 Office
info@frascoldusa.com - www.frascoldusa.com

CDU ASSEMBLY PLANT

Frascold India Pvt Ltd.
A172715716, Gallops Industrial Park,
NH-8A, Sarkhej-Bavla Rd, Rajoda,
Ahmedabad, Gujarat 382220

We make
temperature