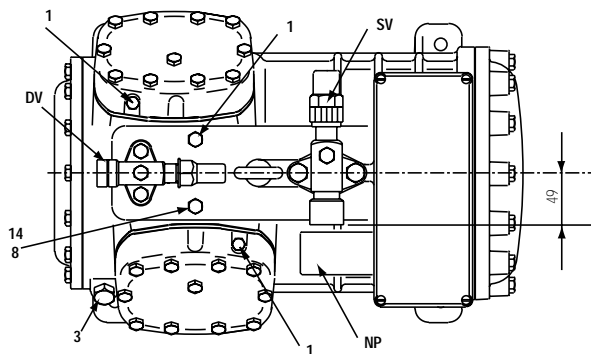
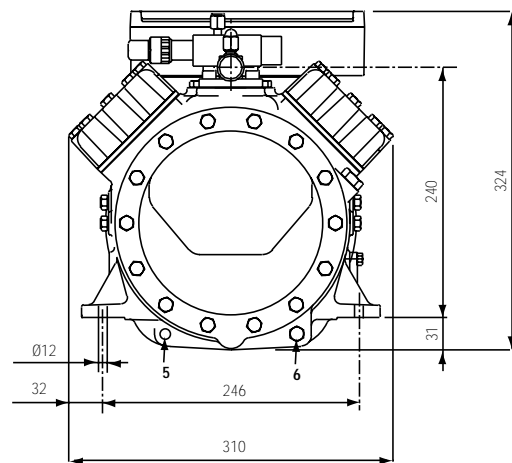
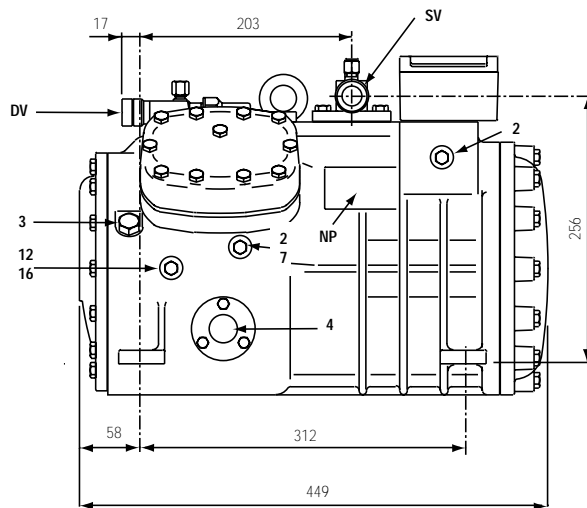


Dati tecnici	Technical data	Technische Daten	
Refrigerante	Refrigerant	Kältemittel	R404A
Capacità volumetrica 50 Hz	Displacement 50 Hz	Hubvolumen 50 Hz	m ³ /h 21.17
Potenza nominale	Nominal power	Elektromotor	kW (HP) 3 (4)
Numero di cilindri	Number of cylinders	Zylinderummer	4
Alesaggio	Bore	Bohrung	mm 50
Corsa	Stroke	Hub	mm 31
Lubrificante	Lubricant	Ölorte	P.O.E.
Carica di lubrificante	Lubricant charge	Ölmenge	l 1.8
Peso netto	Net weight	Nettogewicht	kg 79
Peso lordo	Gross weight	Bruttogewicht	kg 82
Volume imballo	Packing volume	Verpackungsvolumen	dm ³ 76

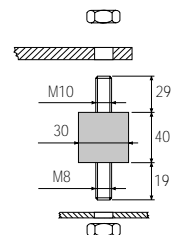
Dimensioni di ingombro

Dimensional drawing

Mass Zeichnung




Supporto antivibrante
• durezza 45°Sh
Vibration absorber
• hardness 45°Sh
Vibrationsabsorber
• Härte 45°Sh



1	attacco di alta pressione	high pressure connection	Hochdruckanschluss	1/8" NPT
2	attacco di bassa pressione	low pressure connection	Niederdruckanschluss	1/8" NPT
3	tappo di carico olio	oil charge plug	Ölfüllung Stopfen	1/4" GAS
4	spia livello olio	oil level sight glass	Ölschauglas	
5	sede resistenza carter	crankcase heater seat	Pos. für Ölumpfheizung	
6	tappo scarico olio	oil drain plug	Ölablass Stopfen	M8x22 ISO4017
7	attacco per valvola iniezione di liquido	liquid injection valve connection	Flüssigkeitseinspritzungsanschluss	1/8" NPT
8	attacco per sensore iniezione di liquido	liquid injection sensor connection	Sensoranschluss	1/8" NPT
12	tappo ritorno olio	oil return plug	Ölrückführung Stopfen	1/8" NPT
14	attacco sensore massima temp.compress.	max discharge temperature sensor connection	Druckgasfühleranschluss	1/8" NPT
16	attacco pressione carter	crankcase pressure connection	Ölumpfdruckanschluss	1/8" NPT
DV	rubinetto di compressione	discharge valve	Druckventil	3/4" 19.0 mm
NP	targhetta	name plate	Verdichtertypschild	
SV	rubinetto di aspirazione	suction valve	Saugventil	1 1/8" 28.6 mm

Q 4 21.1 Y

Condensazione Condensing temperature Verflüssigungs- temperatur °C	R404A									
	Temperatura di evaporazione °C			Evaporating temperature °C			Verdampfungstemperatur °C			
	-5	-10	-15	-20	-25	-30	-35	-40	-45	
Capacità frigorifera W Refrigerating capacity W Kälteleistungsdaten W										
20	18670	15320	12400	9900	7770	5980	4510	3320	2380	
25	17540	14360	11600	9230	7220	5530	4150	3020	2130	
30	16350	13350	10760	8530	6640	5060	3760	2700	1860	
35	15120	12310	9870	7790	6040	4570	3360	2380	1590	
40	13860	11230	8970	7040	5410	4060	2950	2050	1330	
45	12560	10120	8040	6270	4780	3550	2540	1730	1070	
50	11230	9000	7090	5490	4150	3040	2150	1420		
55	9890	7860	6140	4700	3510	2540				
Potenza assorbita W Input power W Leistungsaufnahme W										
20	3127	3132	3053	2904	2700	2456	2187	1907	1632	
25	3646	3550	3380	3152	2880	2580	2265	1950	1651	
30	4104	3912	3658	3357	3023	2671	2317	1974	1657	
35	4501	4220	3888	3519	3129	2732	2344	1978	1649	
40	4839	4474	4070	3640	3200	2764	2347	1964	1630	
45	5120	4677	4206	3721	3236	2767	2328	1934	1600	
50	5344	4830	4298	3763	3240	2743	2288	1889		
55	5513	4933	4346	3768	3212	2694				
C.O.P.										
20	5.970	4.890	4.063	3.408	2.877	2.436	2.063	1.742	1.461	
25	4.809	4.044	3.431	2.928	2.506	2.145	1.830	1.549	1.289	
30	3.985	3.413	2.940	2.540	2.196	1.894	1.622	1.370	1.124	
35	3.360	2.916	2.540	2.215	1.929	1.671	1.433	1.202	0.967	
40	2.863	2.509	2.203	1.933	1.692	1.470	1.258	1.044	0.815	
45	2.452	2.164	1.910	1.684	1.477	1.283	1.093	0.894	0.672	
50	2.101	1.862	1.650	1.458	1.280	1.109	0.937	0.752		
55	1.793	1.593	1.413	1.248	1.094	0.944				

con raffreddamento della testa

with head cooling

mit Zylinderkopfkühlung

Prestazioni calcolate alle seguenti condizioni:

- alimentazione 400/3/50
- senza sottoraffreddamento del liquido
- temperatura del gas aspirato 20°C

Performance are based on the following conditions:

- supply 400/3/50
- without liquid subcooling
- suction gas temperature 20°C

Die gezeigten Leistungsdaten basieren auf den folgenden Bedingungen:

- Netz 400/3/50
- ohne Flüssigkeitsunterkühlung
- Sauggastemperatur 20°C



I dati delle prestazioni dei compressori sono certificati secondo le norme ASERCOM.

I compressori certificati sono elencati nel sito web ASERCOM - www.ASERCOM.org



Performance data of the compressor are certified according to the ASERCOM standards.

All certified compressors are listed on the ASERCOM web site - www.ASERCOM.org



Leistungsdaten von Verdichtern sind nach dem ASERCOM Standard gekennzeichnet. Die ASERCOM gekennzeichneten Verdichtern sind in der Web-Site des ASERCOM gelistet - www.ASERCOM.org