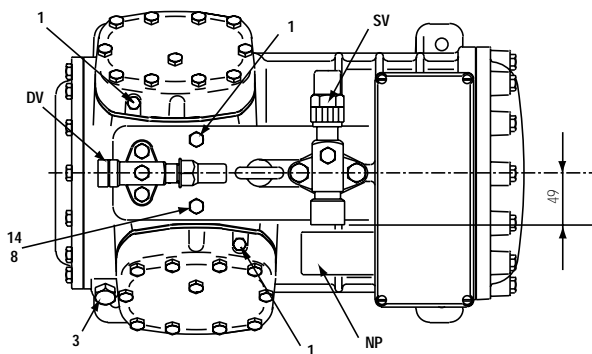
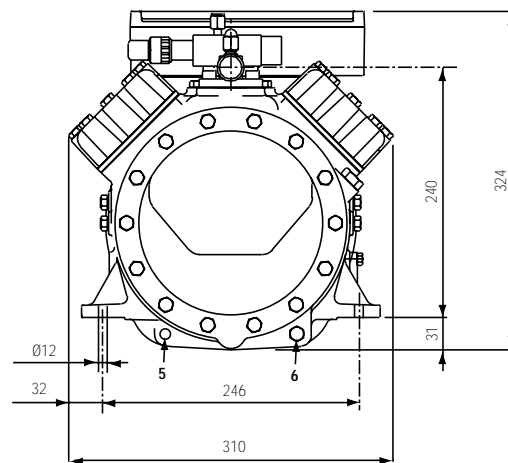
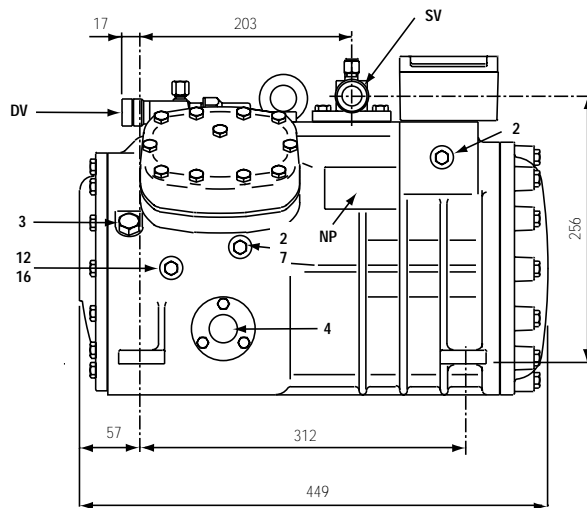


Dati tecnici	Technical data	Technische Daten	
Refrigerante	Refrigerant	Kältemittel	<b>R407C</b>
Capacità volumetrica 50 Hz	Displacement 50 Hz	Hubvolumen 50 Hz	m <sup>3</sup> /h 21.18
Potenza nominale	Nominal power	Elektromotor	kW (HP) 3.7 (5)
Numero di cilindri	Number of cylinders	Zylinder Nummer	4
Alesaggio	Bore	Bohrung	mm 50
Corsa	Stroke	Hub	mm 31
Lubrificante	Lubricant	Ölart	P.O.E.
Carica di lubrificante	Lubricant charge	Ölmenge	l 1.8
Peso netto	Net weight	Nettogewicht	kg 79
Peso lordo	Gross weight	Bruttogewicht	kg 82
Volume imballo	Packing volume	Verpackungsvolumen	dm <sup>3</sup> 76

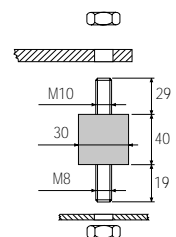
### Dimensioni di ingombro

### Dimensional drawing

### Mass Zeichnung




Supporto antivibrante  
• durezza 45°Sh  
Vibration absorber  
• hardness 45°Sh  
Vibrationsabsorber  
• Härte 45°Sh



<b>1</b>	attacco di alta pressione	high pressure connection	Hochdruckanschluss	<b>1/8" NPT</b>
<b>2</b>	attacco di bassa pressione	low pressure connection	Niederdruckanschluss	<b>1/8" NPT</b>
<b>3</b>	tappo di carico olio	oil charge plug	Ölfüllung Stopfen	<b>1/4" GAS</b>
<b>4</b>	spia livello olio	oil level sight glass	Ölschauglas	
<b>5</b>	sede resistenza carter	crankcase heater seat	Pos. für Ölumpfheizung	
<b>6</b>	tappo scarico olio	oil drain plug	Ölablass Stopfen	<b>M8x22 ISO4017</b>
<b>7</b>	attacco per valvola iniezione di liquido	liquid injection valve connection	Flüssigkeitseinspritzungsanschluss	<b>1/8" NPT</b>
<b>8</b>	attacco per sensore iniezione di liquido	liquid injection sensor connection	Sensoranschluss	<b>1/8" NPT</b>
<b>12</b>	tappo ritorno olio	oil return plug	Ölrückführung Stopfen	<b>1/8" NPT</b>
<b>14</b>	attacco sensore massima temp.compress.	max discharge temperature sensor connection	Druckgasfühleranschluss	<b>1/8" NPT</b>
<b>16</b>	attacco pressione carter	crankcase pressure connection	Ölumpfdruckanschluss	<b>1/8" NPT</b>
<b>DV</b>	rubinetto di compressione	discharge valve	Druckventil	<b>3/4" 19.0 mm</b>
<b>NP</b>	targhetta	name plate	Verdichtertypschild	
<b>SV</b>	rubinetto di aspirazione	suction valve	Saugventil	<b>1 1/8" 28.6 mm</b>

# Q 5 21.1 Y

Condensazione Condensing temperature Verflüssigungs- temperatur °C	<b>R407C</b>								
	Temperatura di evaporazione °C			Evaporating temperature °C			Verdampfungstemperatur °C		
	12.5	10	5	0	-5	-10	-15	-20	
<b>Capacità frigorifera W</b>			<b>Refrigerating capacity W</b>			<b>Kälteleistungsdaten W</b>			
20				19500	15740	12530	9830	7590	5760
25			22510	18370	14800	11760	9190	7070	5330
30	28130	25640	21130	17210	13840	10970	8550	6550	4910
35	26330	23970	19720	16030	12870	10170	7910	6030	4490
40	24500	22290	18300	14850	11890	9380	7270	5530	4100
45	22660	20590	16860	13650	10910	8590	6650	5040	3720
50	20800	18880	15430	12460	9940	7820	6050	4580	3380
55	18940	17170	13990	11280	8990	7060	5470		
60	17080	15460	12570	10110	8050	6340			
<b>Potenza assorbita W</b>			<b>Input power W</b>			<b>Leistungsaufnahme W</b>			
20				2628	2722	2695	2573	2381	2143
25			2947	3072	3066	2954	2761	2512	2232
30	3161	3301	3459	3476	3376	3185	2927	2628	2311
35	3814	3890	3931	3846	3658	3394	3077	2733	2386
40	4423	4438	4369	4187	3917	3585	3215	2832	2461
45	4993	4950	4776	4504	4159	3765	3348	2932	2542
50	5530	5432	5159	4803	4387	3938	3479	3036	2633
55	6039	5889	5523	5088	4608	4108	3614		
60	6524	6326	5873	5365	4826	4283			
<b>C.O.P.</b>									
20				7.421	5.783	4.650	3.819	3.187	2.688
25			7.639	5.980	4.828	3.980	3.330	2.813	2.389
30	8.897	7.766	6.108	4.951	4.099	3.444	2.922	2.492	2.123
35	6.903	6.163	5.016	4.169	3.517	2.998	2.571	2.207	1.882
40	5.540	5.022	4.188	3.546	3.035	2.616	2.262	1.952	1.664
45	4.538	4.159	3.531	3.031	2.624	2.282	1.987	1.720	1.464
50	3.762	3.475	2.990	2.595	2.266	1.985	1.738	1.510	1.284
55	3.136	2.915	2.533	2.217	1.950	1.719	1.513		
60	2.618	2.443	2.140	1.885	1.668	1.480			

con raffreddamento della testa

with head cooling

mit Zylinderkopfkühlung

Prestazioni calcolate alle seguenti condizioni:

- alimentazione 400/3/50
- senza sottoraffreddamento del liquido
- temperatura del gas aspirato 20°C

Performance are based on the following conditions:

- supply 400/3/50
- without liquid subcooling
- suction gas temperature 20°C

Die gezeigten Leistungsdaten basieren auf den folgenden Bedingungen:

- Netz 400/3/50
- ohne Flüssigkeitsunterkühlung
- Sauggastemperatur 20°C



I dati delle prestazioni dei compressori sono certificati secondo le norme ASERCOM.

I compressori certificati sono elencati nel sito web ASERCOM - [www.ASERCOM.org](http://www.ASERCOM.org)



Performance data of the compressor are certified according to the ASERCOM standards.

All certified compressors are listed on the ASERCOM web site - [www.ASERCOM.org](http://www.ASERCOM.org)



Leistungsdaten von Verdichtern sind nach dem ASERCOM Standard gekennzeichnet. Die ASERCOM gekennzeichneten Verdichtern sind in der Web-Site des ASERCOM gelistet - [www.ASERCOM.org](http://www.ASERCOM.org)